

Poinciana LYNX Bus Service

May 2018

Introduction



- Tomika Monterville – LYNX Director of Planning & Development
- Bruce Detweiler – LYNX Manager of Service Planning
- Discussion will be on the following topics
 - Current LYNX bus service in the Poinciana area
 - SunRail Phase II
 - Bus changes for SunRail extension

SunRail Facts



- Anticipated opening in July 2018
- First train proposed to leave Poinciana Station at 5:45 a.m.
- Last train arrive Poinciana Station at 9:28 p.m.
- Connecting LYNX bus service at Poinciana Station
 - Link 306 service to Disney Springs and Poinciana Walmart
 - NL 604 service to Intercession City, Campbell City and Crescent Lakes

Proposed Poinciana Area Route Changes



26

Pleasant Hill Road

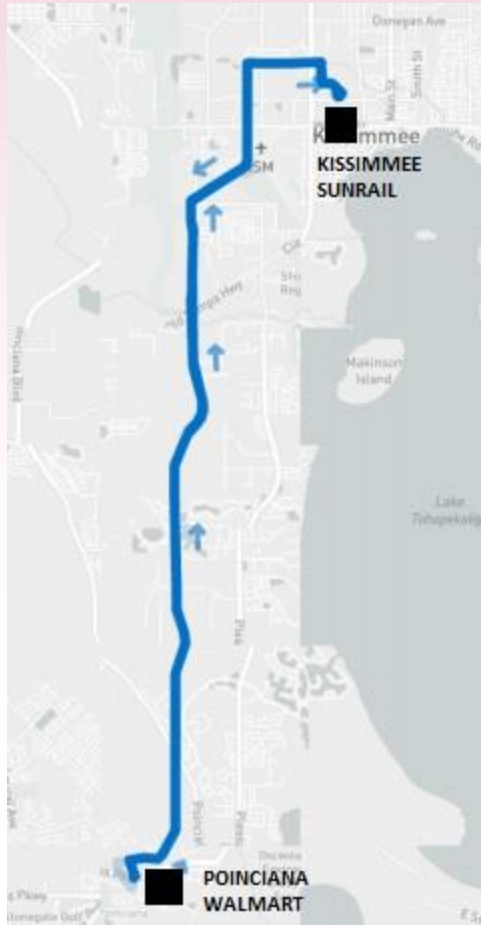
306

Disney Direct

604

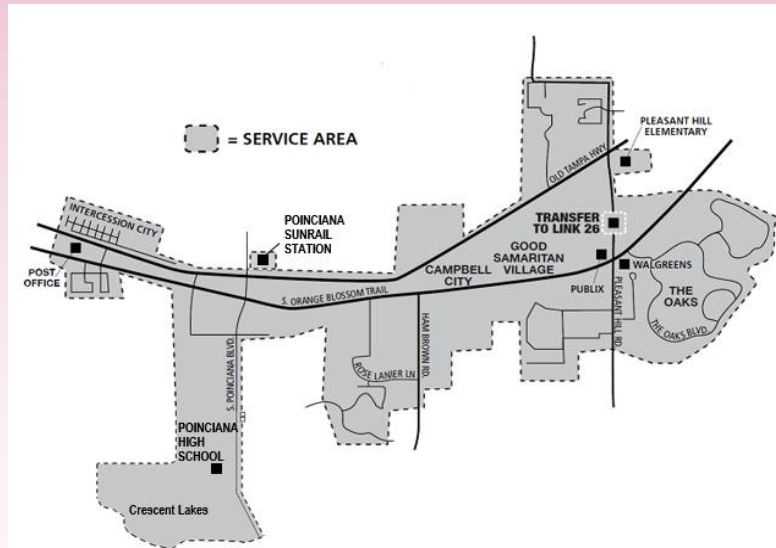
Intercession City/Campbell City NeighborLink

Link 26 – NEW Trips Added



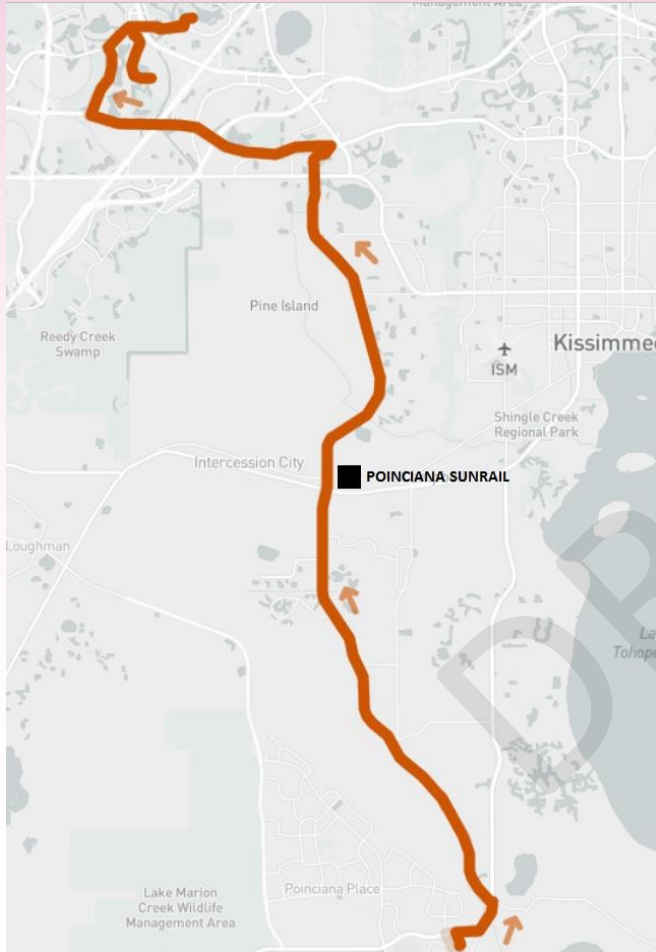
- **Link 26 will be the main connection between SunRail and the Poinciana area**
- In order to meet early NB a.m. trains, 5:10 a.m. & 5:40 a.m. trips from Poinciana Walmart to Kissimmee Intermodal Station will be added to the schedule on weekdays
- Link 26 will continue to offer 30-minute service during the weekday as current
- Trips will be adjusted to meet SunRail trains at Kissimmee Intermodal Station

NEIGHBORLINK 604 – Proposed Changes



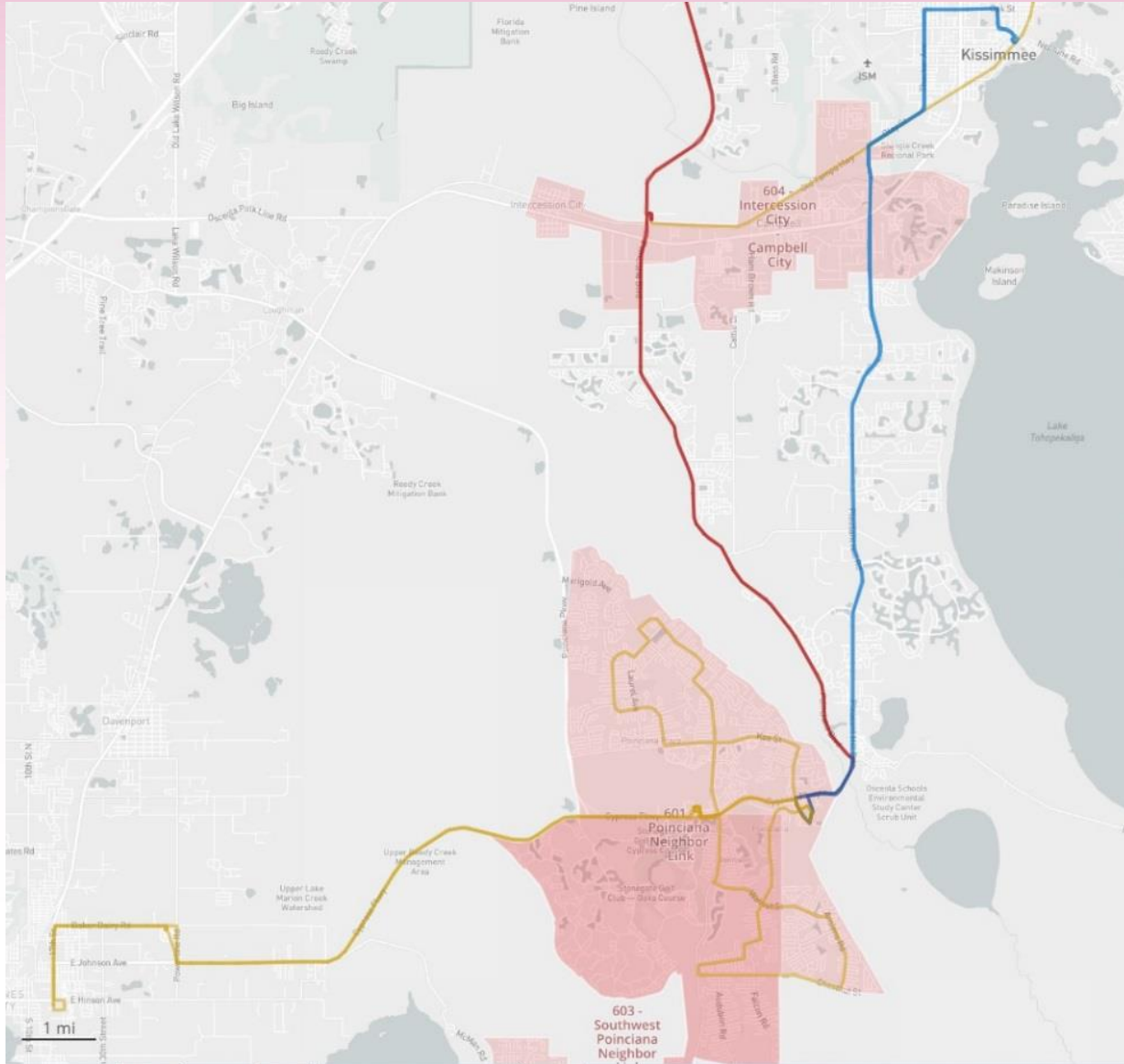
- **Extend zone north on Poinciana Blvd into the new Poinciana Station and south along Poinciana Blvd to the Crescent Lakes area**
- Change pickup and drop-off time schedule to Poinciana Station to connect with SunRail
- Maintain current level of service (60-minute headway) on weekdays
- Schedule changes include start a.m. service one hour earlier to meet first NB train, add additional trips in p.m. to meet evening trains, and several other trip modifications

LINK 306 – Proposed Changes



- **Extend route into the new Poinciana Station** on all trips
- Runtime changes along route to compensate for additional time to serve station
- Maintain current level of service (one a.m. & one p.m. trip) daily
- Connection to NB train at 6:45 a.m. and from SB train at 5:28 p.m.

Poinciana LYNX Bus Service



- Link 26 – Pleasant Hill Road
- Link 306 – Disney Direct
- Link 416 – Haines City
- Link 426 – Poinciana Circulator
- NL 601 – Poinciana
- NL 603 – SW Poinciana
- NL 604 – Intercession City/Campbell City



Questions & Comments
