



# CONNECTING COMMUNITIES, CREATING OPPORTUNITY.

OSCEOLA COUNTY DISTRICT 3  
COMMUNITY & TRANSPORTATION UPDATE  
DECEMBER 4, 2018

**CENTRAL  
FLORIDA  
EXPRESSWAY  
AUTHORITY**



**Local, independent,  
special district  
agency of the state**

**98% privatized:  
590+ Central  
Florida companies**

# CUSTOMER FIRST

- **Savings**
  - Free E-PASS transponders
  - Loyalty discounts
- **Solutions**
  - Portable transponders
  - CollegePASS
  - E-PASS Xtra
- **Safety**
  - Education campaigns
  - Road Rangers
- **Service**
  - ReLoad Lanes
  - Local Call Center
  - Walk-in Service Center
  - Email and Website
  - Social Media

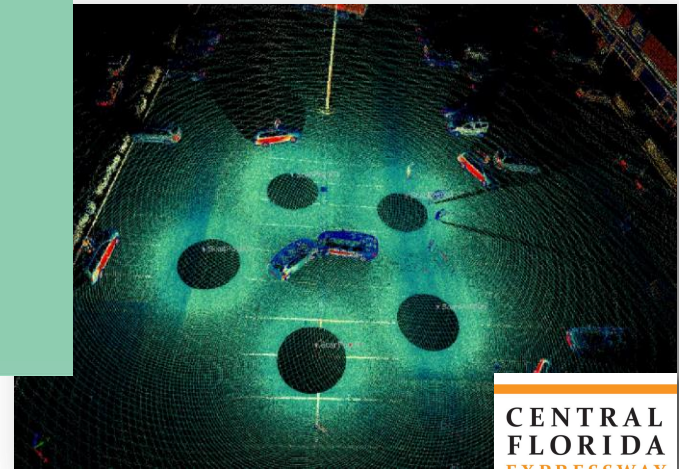


# INNOVATION FORWARD

- **E-PASS 1<sup>st</sup> Electronic Toll Transponder in Florida**
- **CFX 1<sup>st</sup> in Florida to accept E-ZPASS**
- **Toll Systems Improvement project**
- **Pilot programs**
  - **Wrong-Way Driving Pilot Program**
  - **3D Laser Scanning Crash Scene Investigation**
- **Tech and Sustainability**
  - **Sustainable Infrastructure**
  - **Central Florida Autonomous Vehicle Partnership**



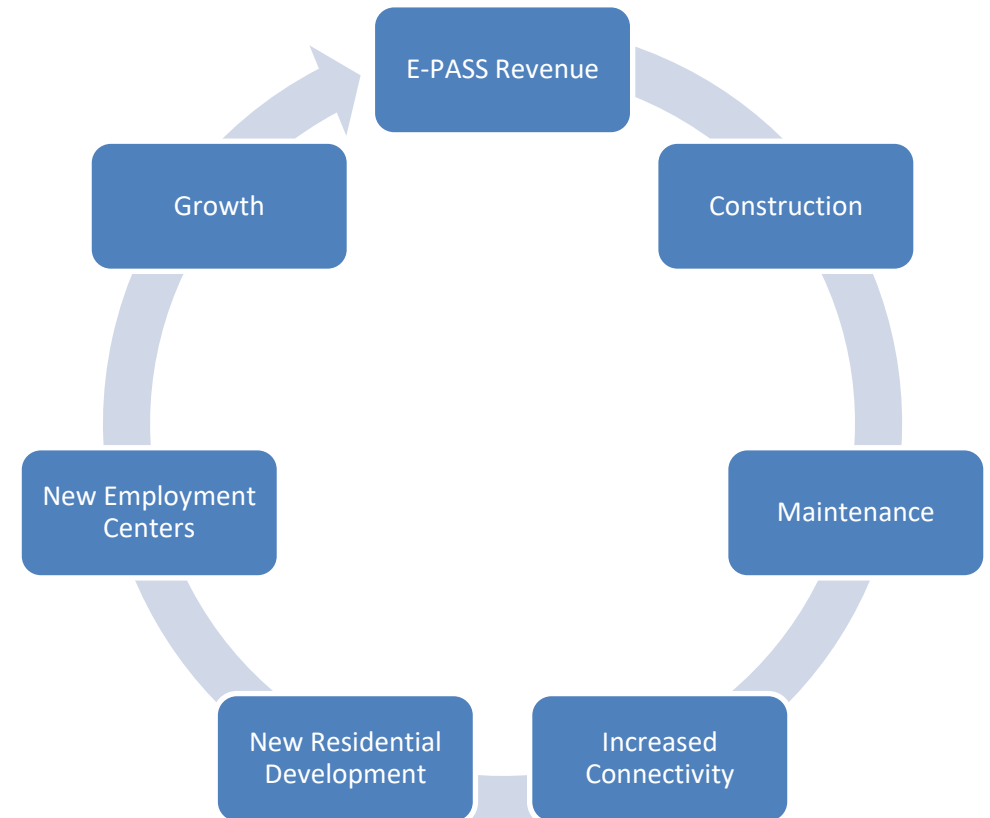
*Did You Know*  
E-PASS was first introduced in 1994 as the FIRST electronic toll collection system in the state.



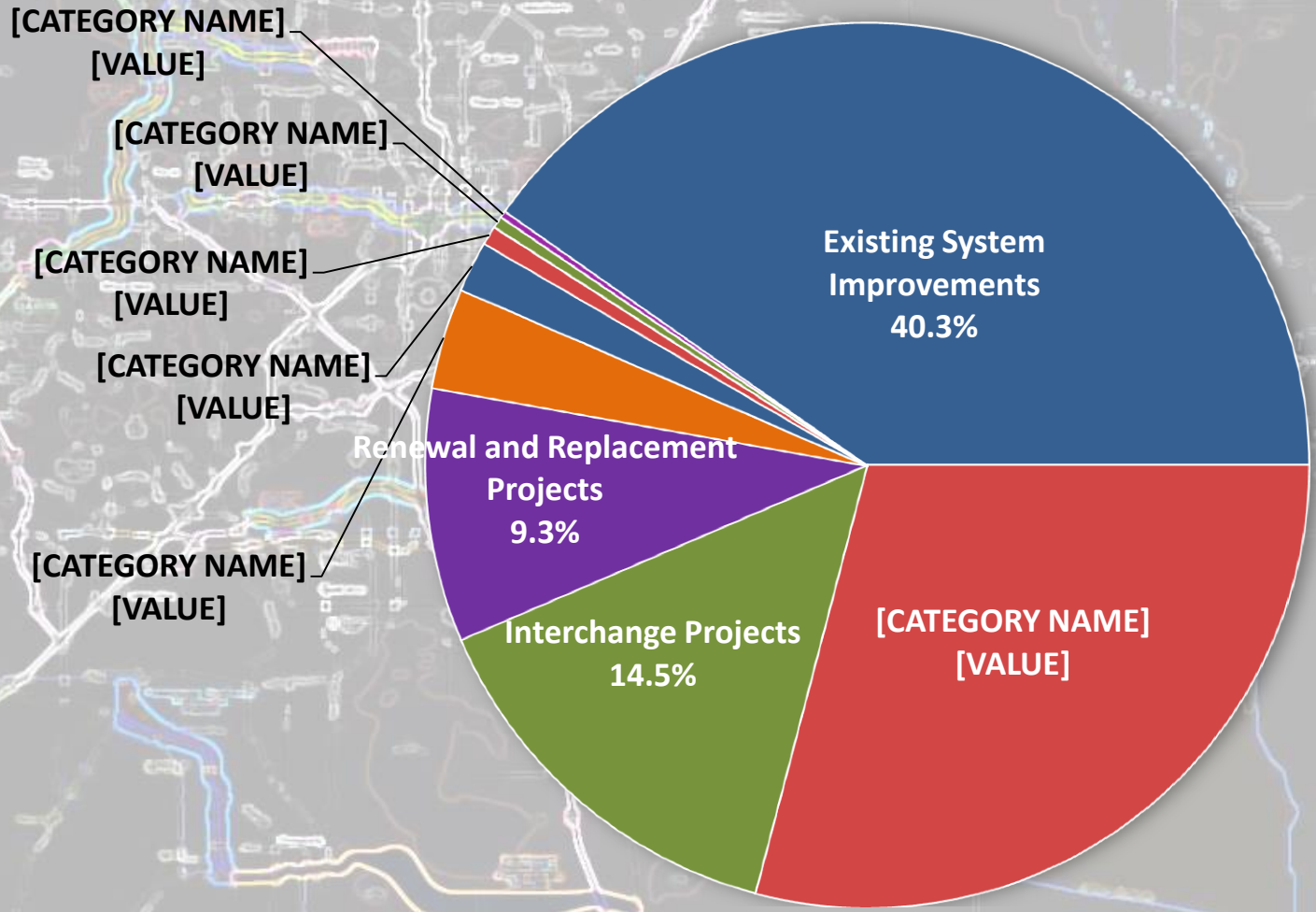
# REGIONAL IMPACT

## Local Beltway, Local Benefits

- **Tolls paid here, stay here**
  - Community focused
  - Job creation – direct and indirect
- **Improved connectivity leverages regional assets**
  - Connects regional employment centers to residential development
- **System improvements reduce congestion and improve resiliency**
- **Opportunities for multi-modal transit**



# 5 YEAR WORK PLAN → \$1.9B



**LARGEST  
WORK PLAN  
IN CFX  
HISTORY!**

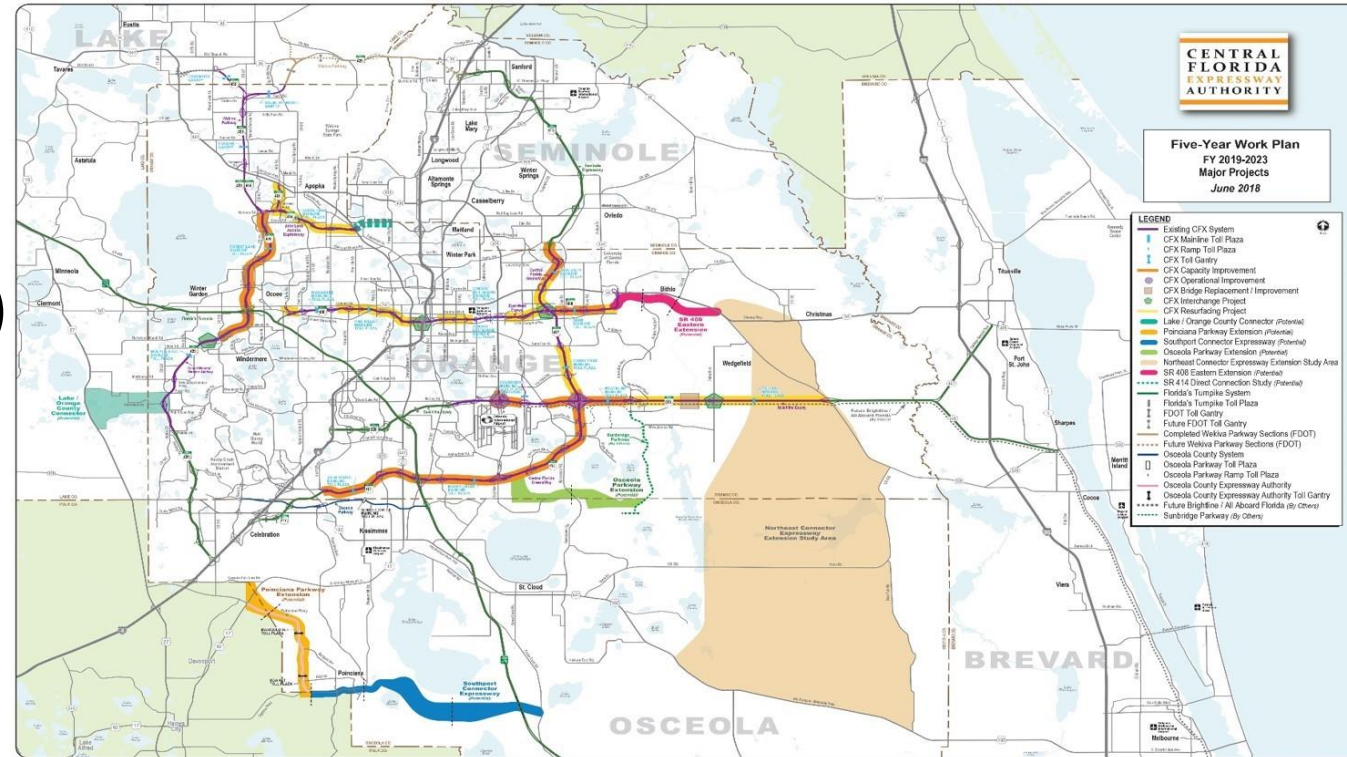
# FEASIBILITY AND PROJECT STUDIES

## Current Studies:

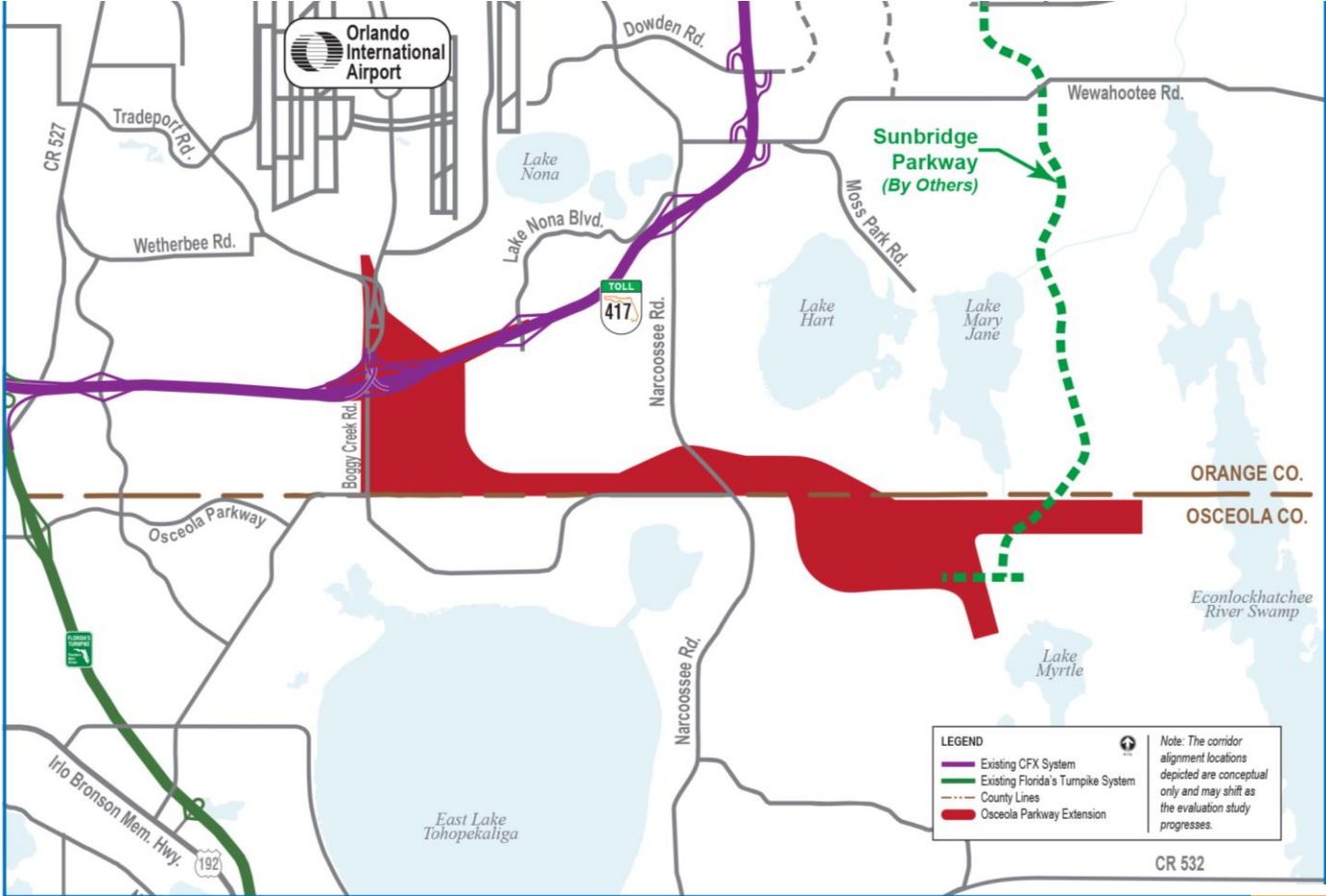
- Poinciana Parkway Extension (PD&E)
- Osceola Parkway Extension (PD&E)
- Lake/Orange County Connector (PD&E)
- Northeast Connector Expressway Extension\*

## Completed Studies:

- SR 408 Eastern Extension



# Osceola Parkway Extension PD&E Re-evaluation Study – Study Area



**LEGEND**

- Existing CFX System
- Existing Florida's Turnpike System
- - - County Lines
- Osceola Parkway Extension

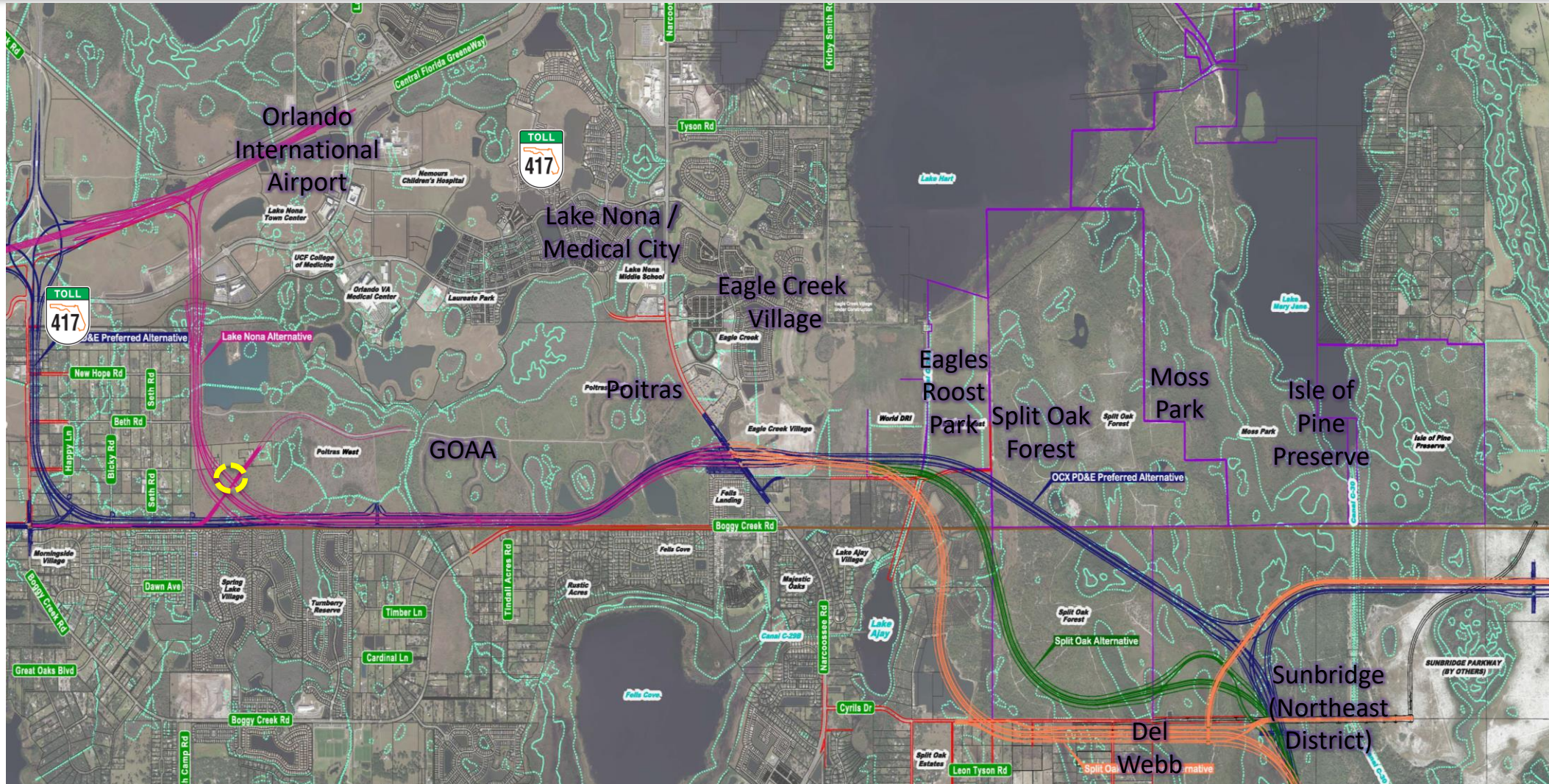
Note: The corridor alignment locations depicted are conceptual only and may shift as the evaluation study progresses.



# Osceola Parkway Extension PD&E Re-evaluation Study - Purpose & Need

- Provide for additional east-west routes within the project area
- Improve roadway connections to SR 417
- Enhance mobility of the area's growing population and economy
- Relieve congestion on local roads
- Provide for the incorporation of future transit options
- Promote regional connectivity
- Accommodate ongoing and planned growth

# Osceola Parkway Extension PD&E Re-Evaluation Study Alternatives



# Osceola Parkway Extension PD&E Re-evaluation Study - Schedule



## Osceola Parkway Extension PD&E Re-evaluation Study Schedule



Schedule is subject to change. Revisions will be posted as soon as they are finalized.



# Osceola Parkway Extension PD&E Re-evaluation Study – Key Current Activities

- Environmental Data Collection & Analysis
- Large Landholder & Other Key Stakeholder Meetings
- Refining Feasibility Study Alternatives
- Developing Additional Alternatives
- Traffic & Safety Data Collection & Analysis
- Public Involvement



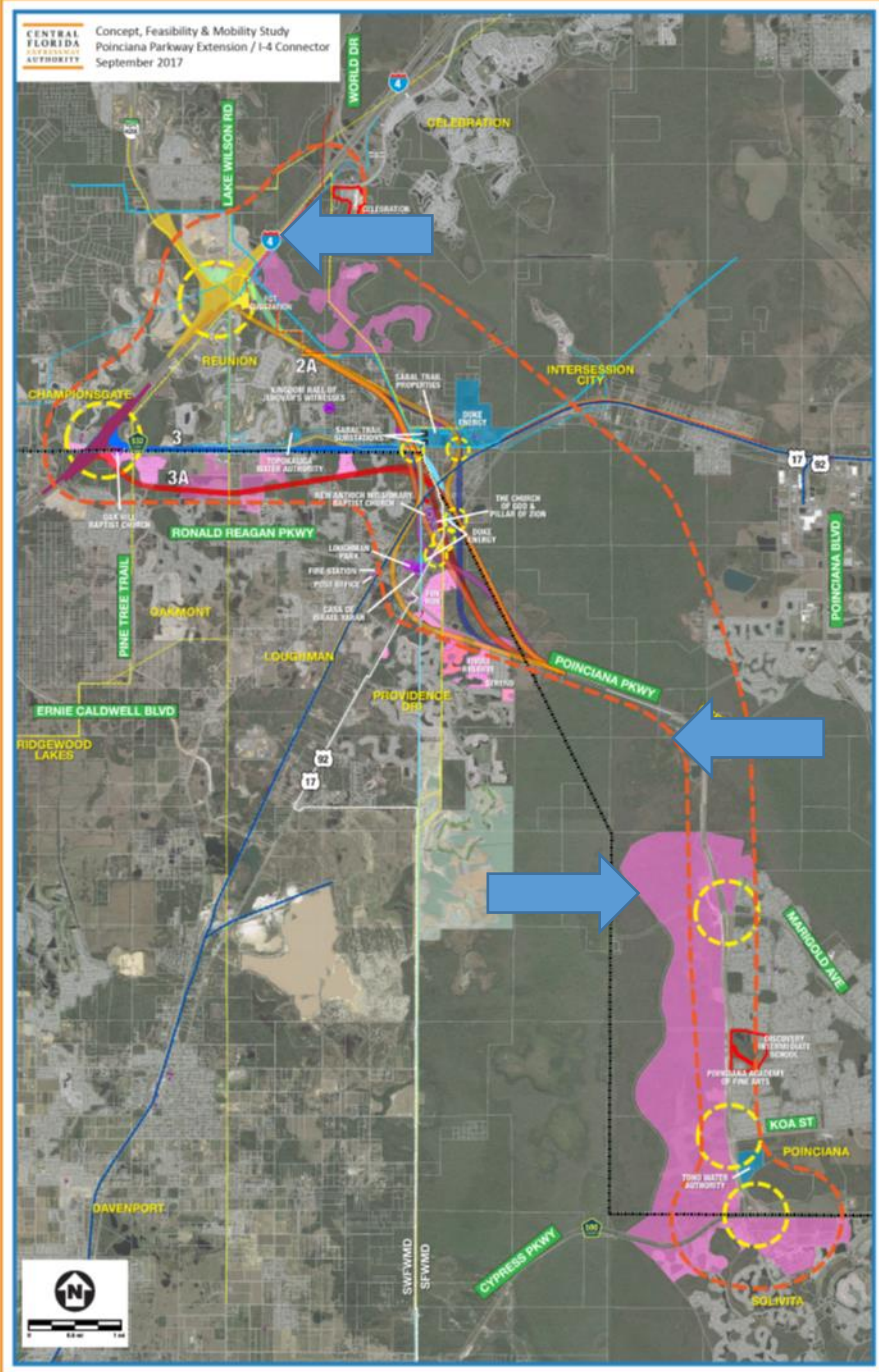
# Osceola Parkway Extension Public Involvement

- Stakeholder Meetings
- Environmental & Project Advisory Groups – February 2019
- Public Meeting – April 2019
- Board Presentations
- CFX Study Webpage & Study Facebook Page



# Poinciana Parkway Extension Feasibility Study

- Widen Poinciana Parkway
- Evaluated Alternatives: Parkway to I-4



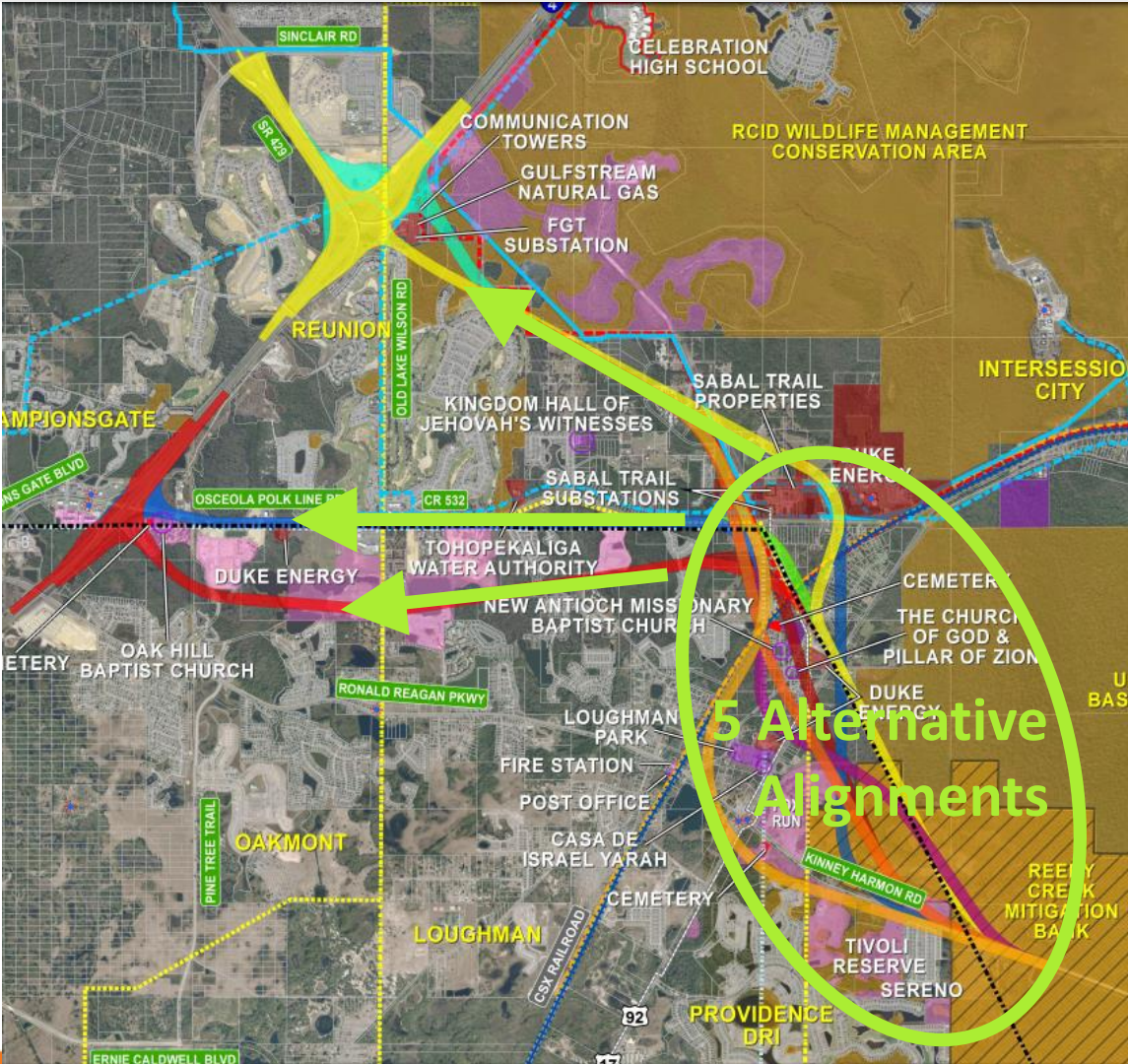
# Poinciana Parkway Extension

## Purpose and Need

- Enhance mobility: CR 532 to Parkway
- Reduce roadway congestion and delays
- Expand regional connectivity
- Provide transportation infrastructure for planned growth
- Provide consistency with local plans and policies
- Enhance safety

# Poinciana Parkway Extension Feasibility Study and Findings

- 5 alternative alignments: Parkway to CR 532
- 3 alternative alignments: CR 532 to I-4
- Project may be viable (CFX criteria)
- Phase I: Connection to CR 532

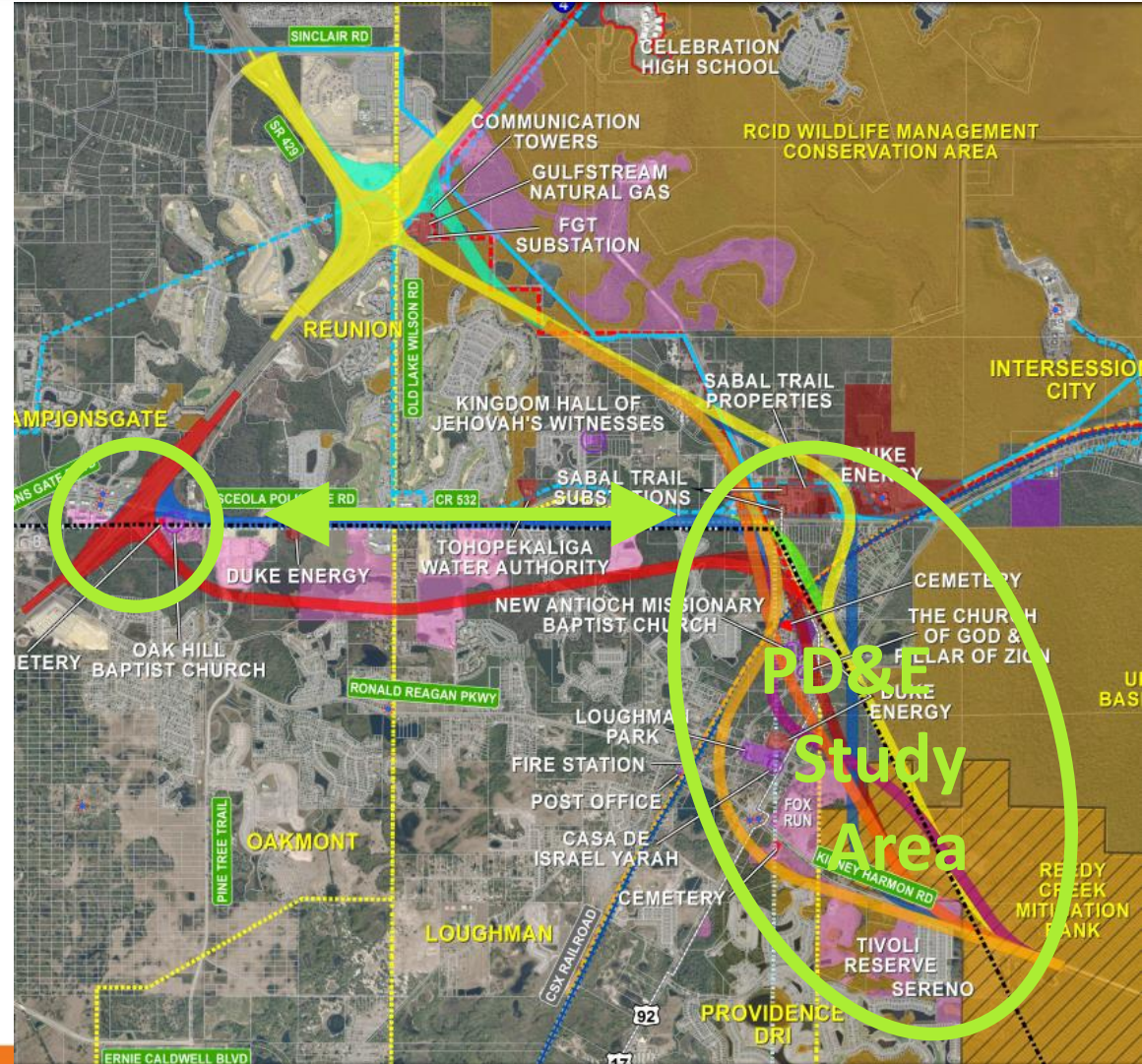




# Poinciana Parkway Extension PD&E Study

## Parkway Bridge to CR 532

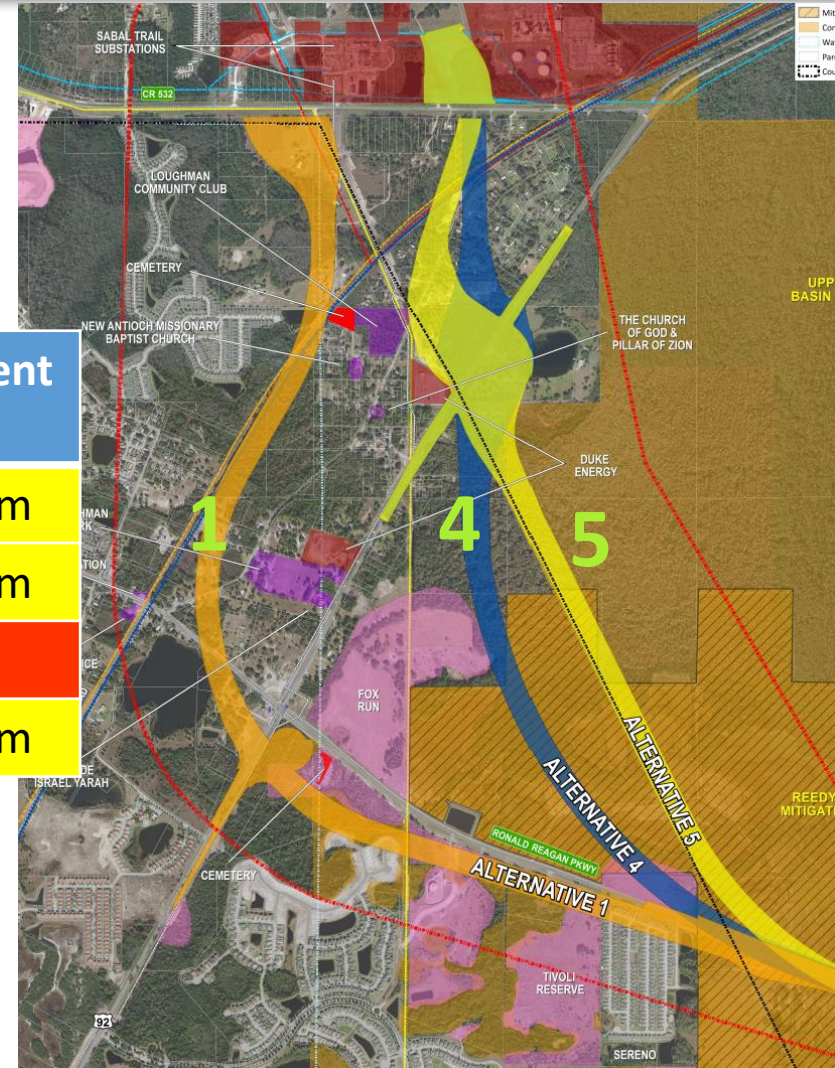
- Advances Project
- I-4 connection: Requires FDOT and FHWA approval
  - CFX coordinating with FDOT
- Alternative alignments: Compatible with future I-4 connection (SR 429 or CR 532)
- Improvements by others
  - Widen CR 532
  - I-4/CR 532 interchange



# Poinciana Parkway Extension

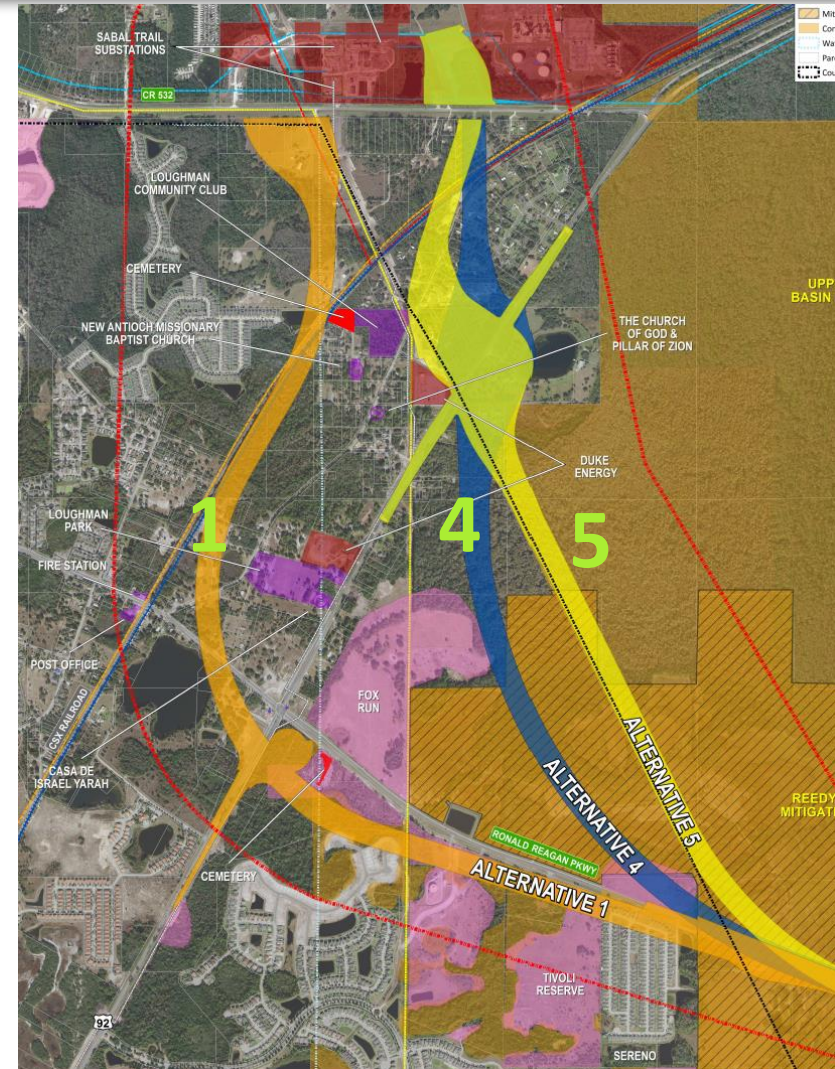
## Eliminate Alignments 2 and 3 from PD&E

Evaluation Criteria	Alignment 1	<del>Alignment 2</del>	<del>Alignment 3</del>	Alignment 4	Alignment 5
Physical	Medium	<del>Medium</del>	<del>Medium</del>	Medium	Medium
Cultural	Medium	<del>Medium</del>	<del>Medium</del>	Medium	Medium
Natural	Medium	<del>High</del>	<del>High</del>	High	High
Social	High	<del>High</del>	<del>High</del>	Medium	Medium



# Poinciana Parkway Extension Polk County, Osceola County & OCX Agreement

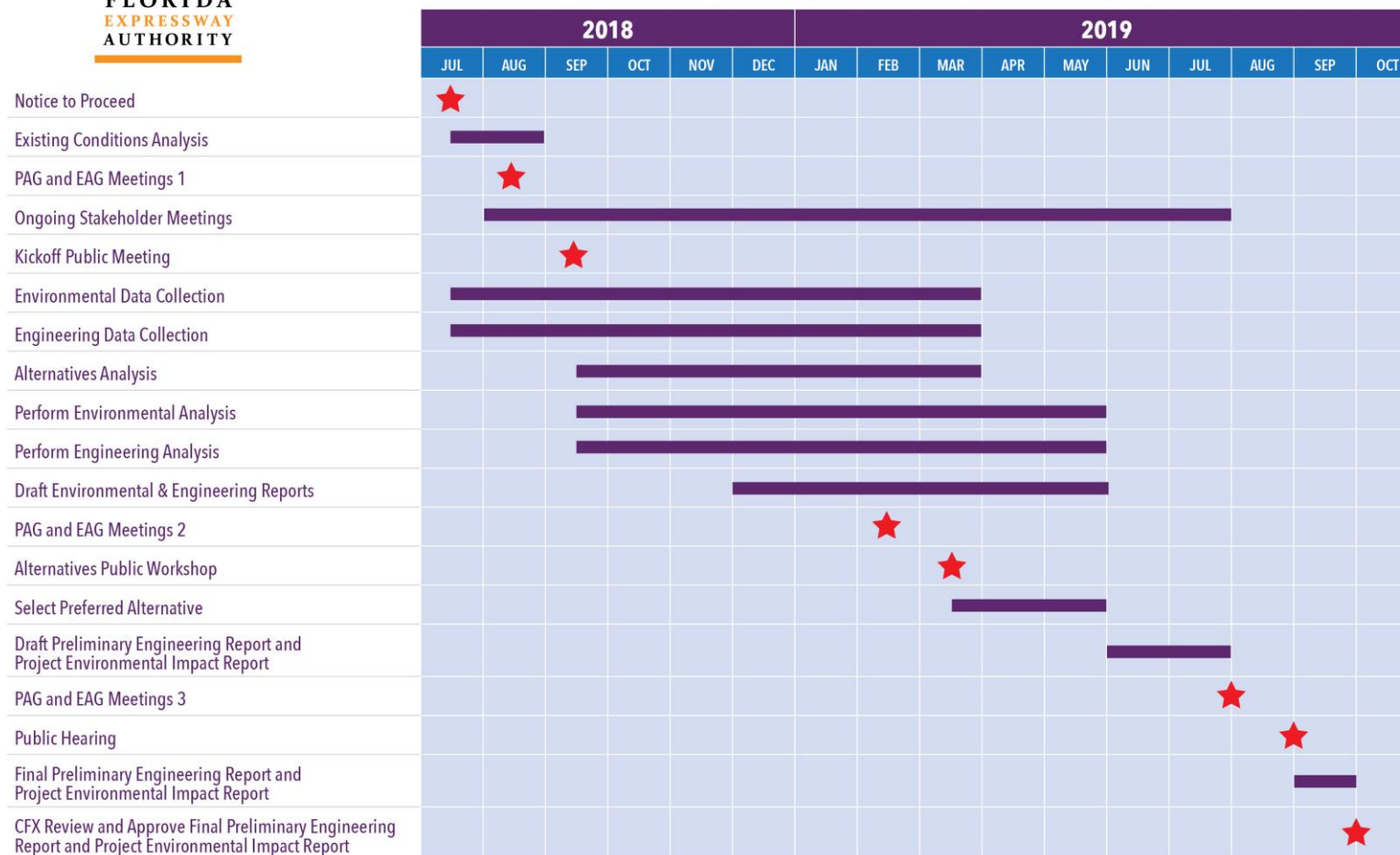
- Expansion: Maintain connection to Ronald Reagan Parkway
- Alternative 1: East-west connection to Poinciana Parkway
- Alternatives 4 and 5: Adding east-west connection (evaluation)
- Polk County access to I-4 Connector (US 17/92 interchange)
- CFX: Work with Polk County to evaluate connections



# Poinciana Parkway Extension PD&E Re-evaluation Study - Schedule

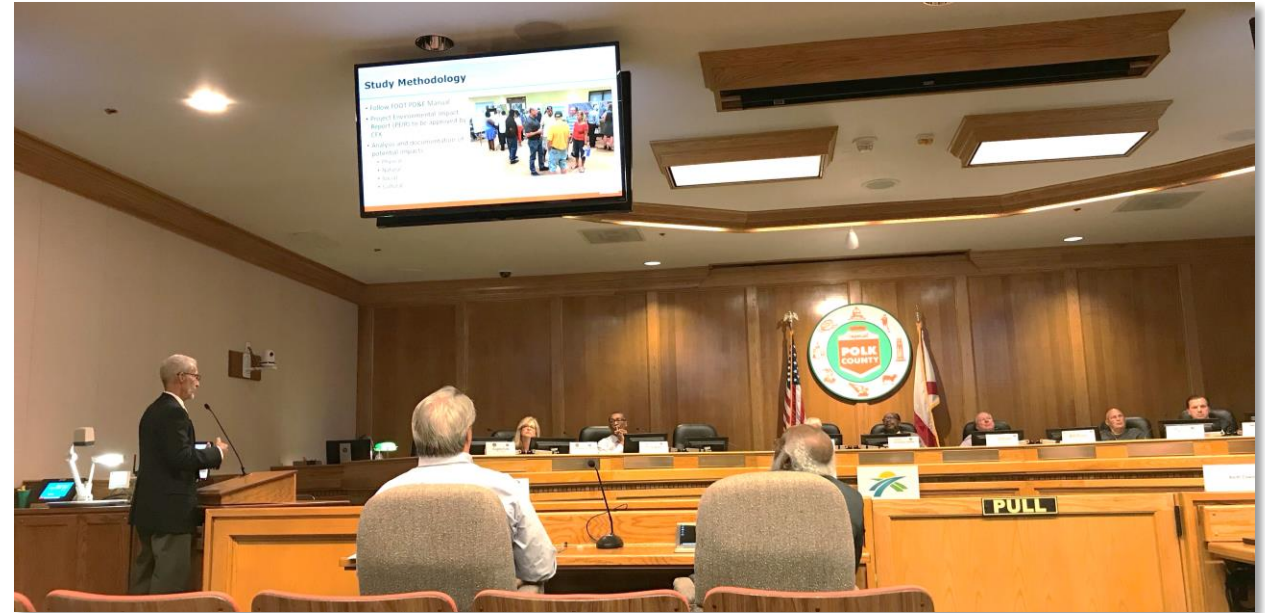


Poinciana Parkway Extension PD&E Study Schedule



# Poinciana Parkway Extension PD&E Study – Key Current Activities

- Utility Coordination
- Environmental Data Collection & Analysis
- Key Stakeholder Meetings
- Refining Feasibility Study Alternatives
- Traffic & Safety Data Collection & Analysis
- Public Involvement



# Public Involvement

- Environmental & Project Advisory Groups
  - Aug. 15, 2018 (40 Attendees)
  - Feb. & July/Aug. 2019
- Public Meetings
  - Kickoff – Sept. 25 (134 Attendees)
  - Alternatives Workshop – March 2019
  - Public Hearing – Aug./Sept. 2019
- Board Presentations
- Stakeholder Meetings
- CFX Study Webpage & Study Facebook Page



# CFX PD&E Studies

## Comments and Questions

For more information contact:  
Mary Brooks  
Public Involvement Coordinator  
407-802-3210

[Projectstudies@CFXway.com](mailto:Projectstudies@CFXway.com)



## Sign up to stay in touch!

Want to learn more about your Expressway Authority? Join the list to receive our monthly electronic newsletter, DRIVING CFX.

\* Email Address

Sign Up

By submitting this form, you are granting: Central Florida Expressway Authority, 4974 ORL Tower Rd., Orlando, FL, 32807 United States, <http://www.cfxway.com> permission to email you. You can revoke permission to mail to your email address at any time using the [SafeUnsubscribe@link](mailto:SafeUnsubscribe@link), found at the bottom of every email. We take your privacy seriously (to see for yourself, please read our [Email Privacy Policy](#)). Emails are serviced by Constant Contact.

## Stay connected with

CENTRAL  
FLORIDA  
EXPRESSWAY  
AUTHORITY



## Keep up with all the CFX Project Studies

CENTRAL  
FLORIDA  
EXPRESSWAY  
AUTHORITY

Just go to  
**facebook**  
and  
**'LIKE'**  
the page

- Lake/Orange County Connector:  
@LakeOrangeConnector
- Poinciana Parkway Extension:  
@PoincianaPkwyExt
- Osceola Parkway Extension:  
@OsceolaPkwyExtPDE
- Northeast Connector Expressway Extension:  
@NEConnectorExpExt

# Like, Follow, Read and Share

CENTRAL  
FLORIDA  
EXPRESSWAY  
AUTHORITY