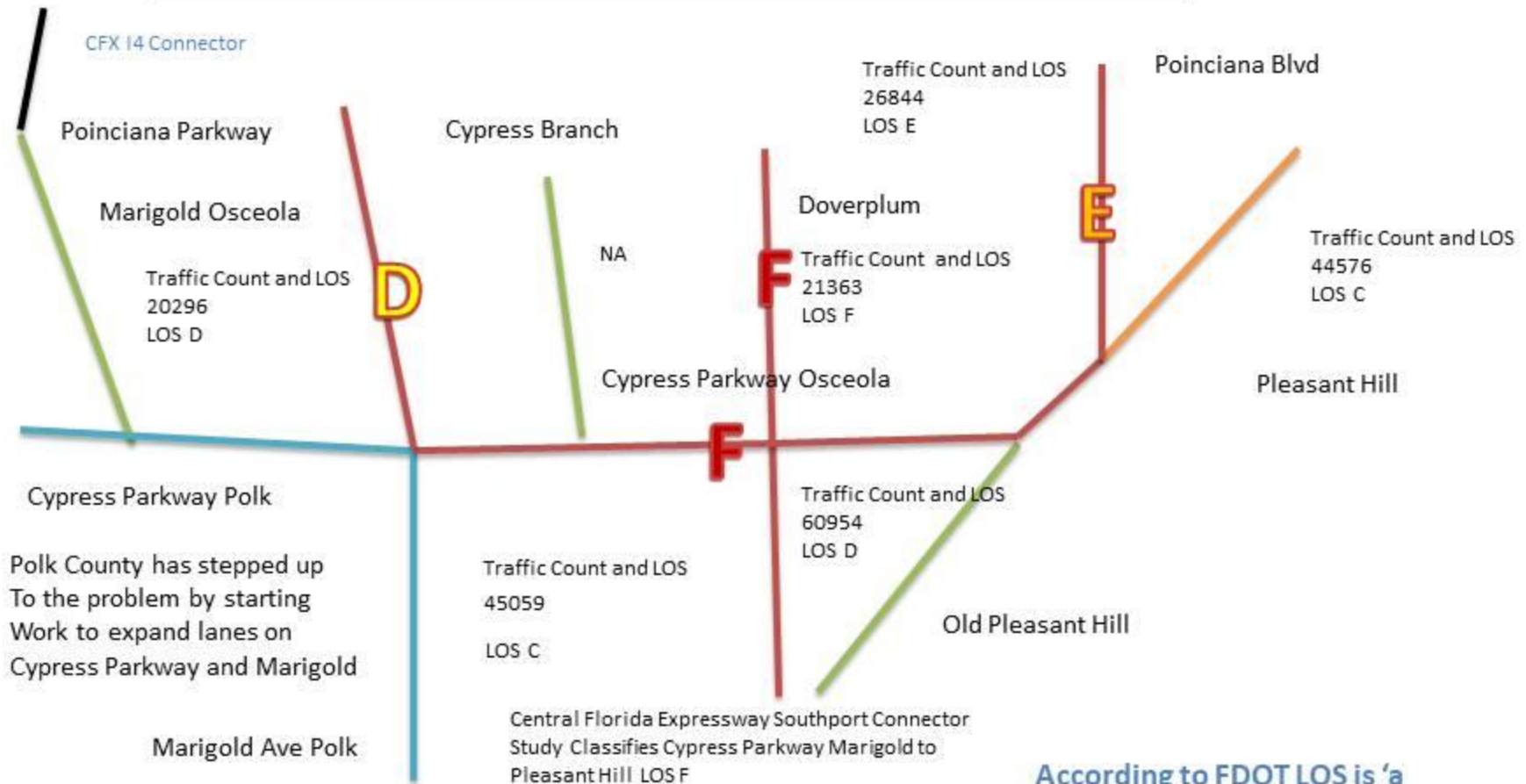




# Poinciana Transportation Update

**Keith Laytham**

# Poinciana Roads and Traffic Levels of Service



According to FDOT LOS is 'a quantitative Stratification of the 'quality of service' of A service or facility into six letter grade levels With 'A' describing the highest quality and 'F' describing the lowest quality.

The Poinciana Osceola Cypress Parkway Section and tributaries show LOS of D, E and F

*If my kids or grandkids came home with those grades they would be in trouble*



# Central Florida Expressway Plan



Poinciana Parkway Extension

# Poinciana Parkway

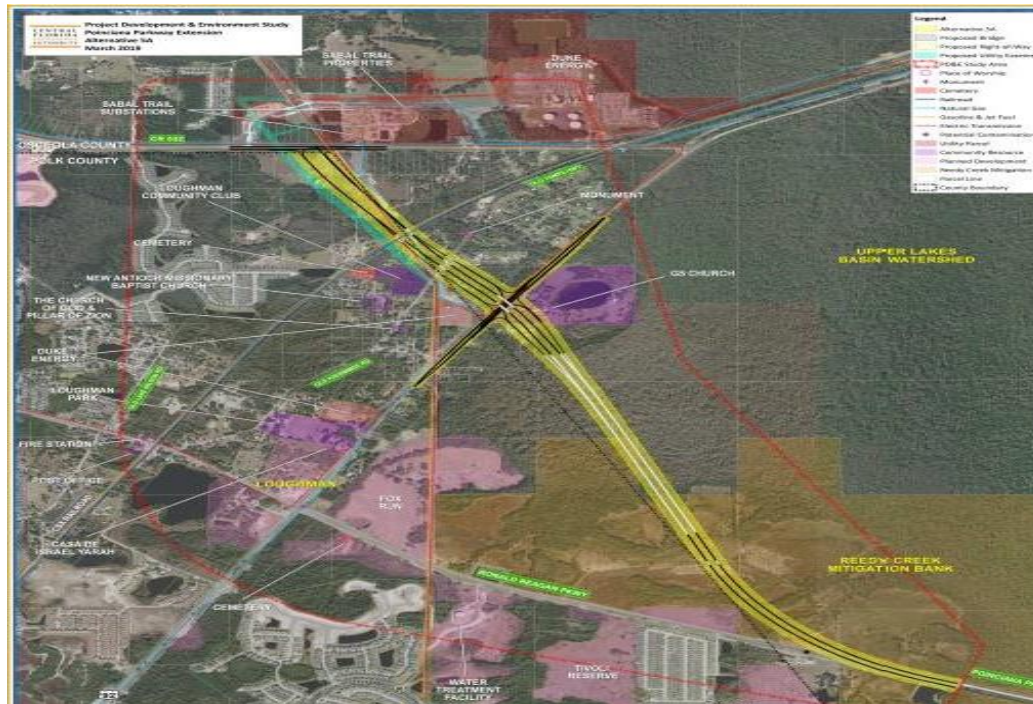


The Poinciana Parkway Expansion to 4 lanes will be done as part of CFX working to take over Poinciana Parkway from OCX

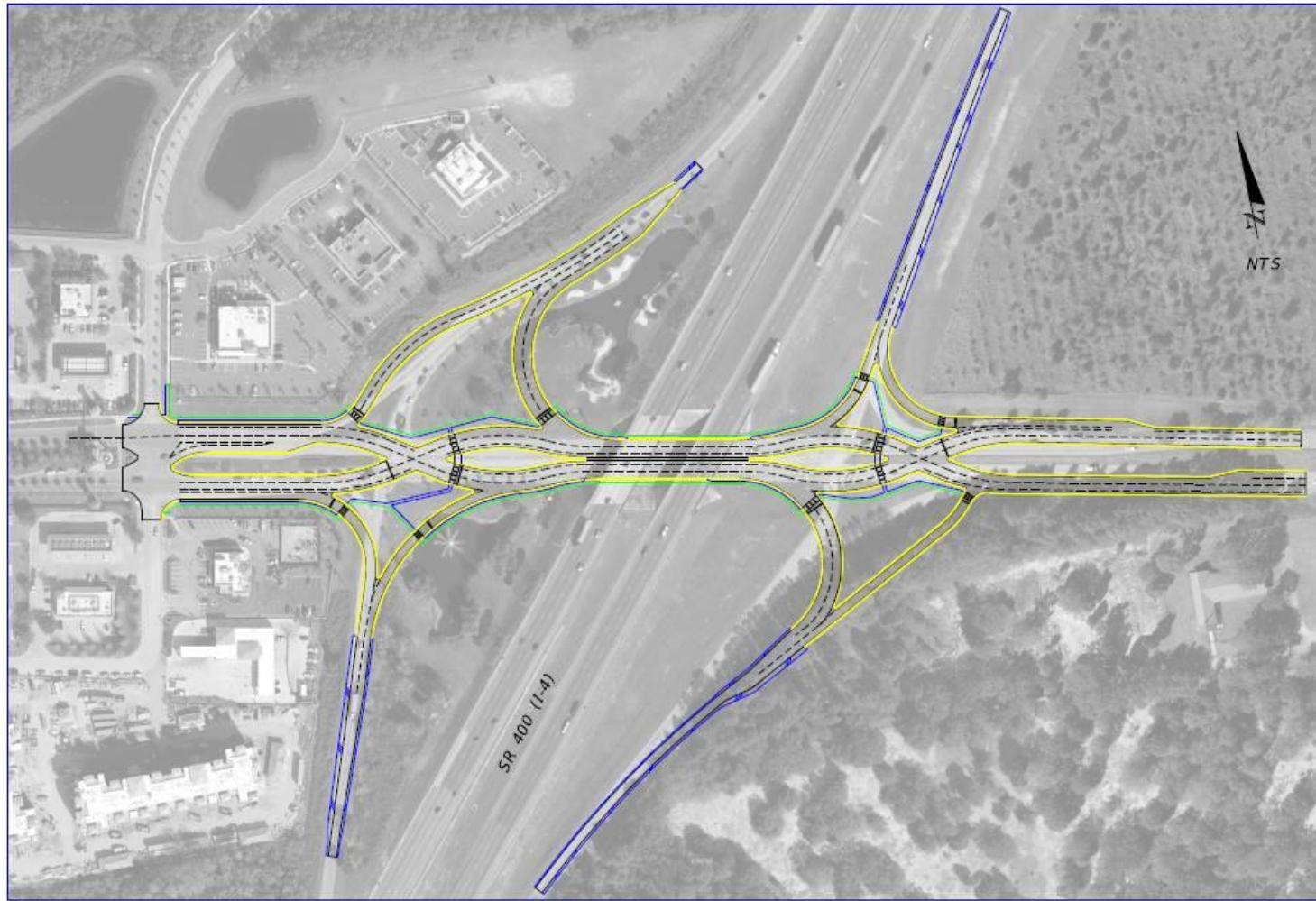
# Poinciana Parkway Extension

Florida Turnpike Enterprise has now programmed a PD&E Study to begin evaluation of connecting Poinciana Parkway Extension To I4 at 429 Intersection

Osceola County will widen CR532 from 2 to 4 lanes between Old Lake Wilson and 17/92



# 14 Champions Gate Diamond Interchange



		REVISIONS	
DATE	DESCRIPTION	DATE	DESCRIPTION

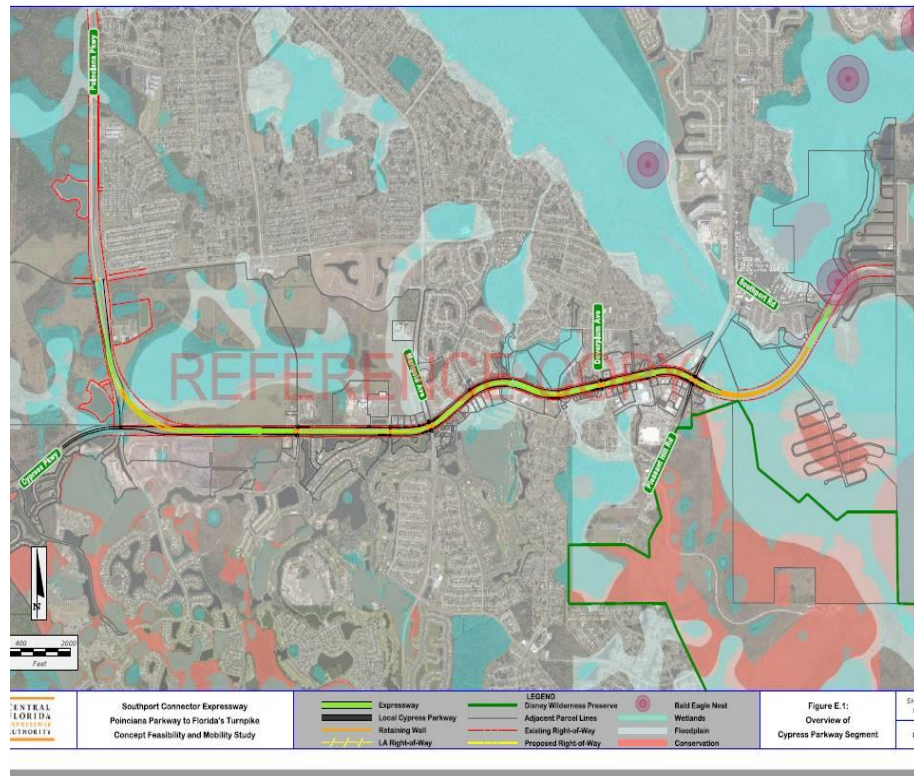
VANASSE HANGEN BRUSTLIN, INC.  
 225 E. ROBINSON STREET  
 ORLANDO, FL 32801  
 CERTIFICATE OF AUTHORIZATION 3932

STATE OF FLORIDA DEPARTMENT OF TRANSPORTATION		
ROAD NO.	COUNTY	FINANCIAL PROJECT ID

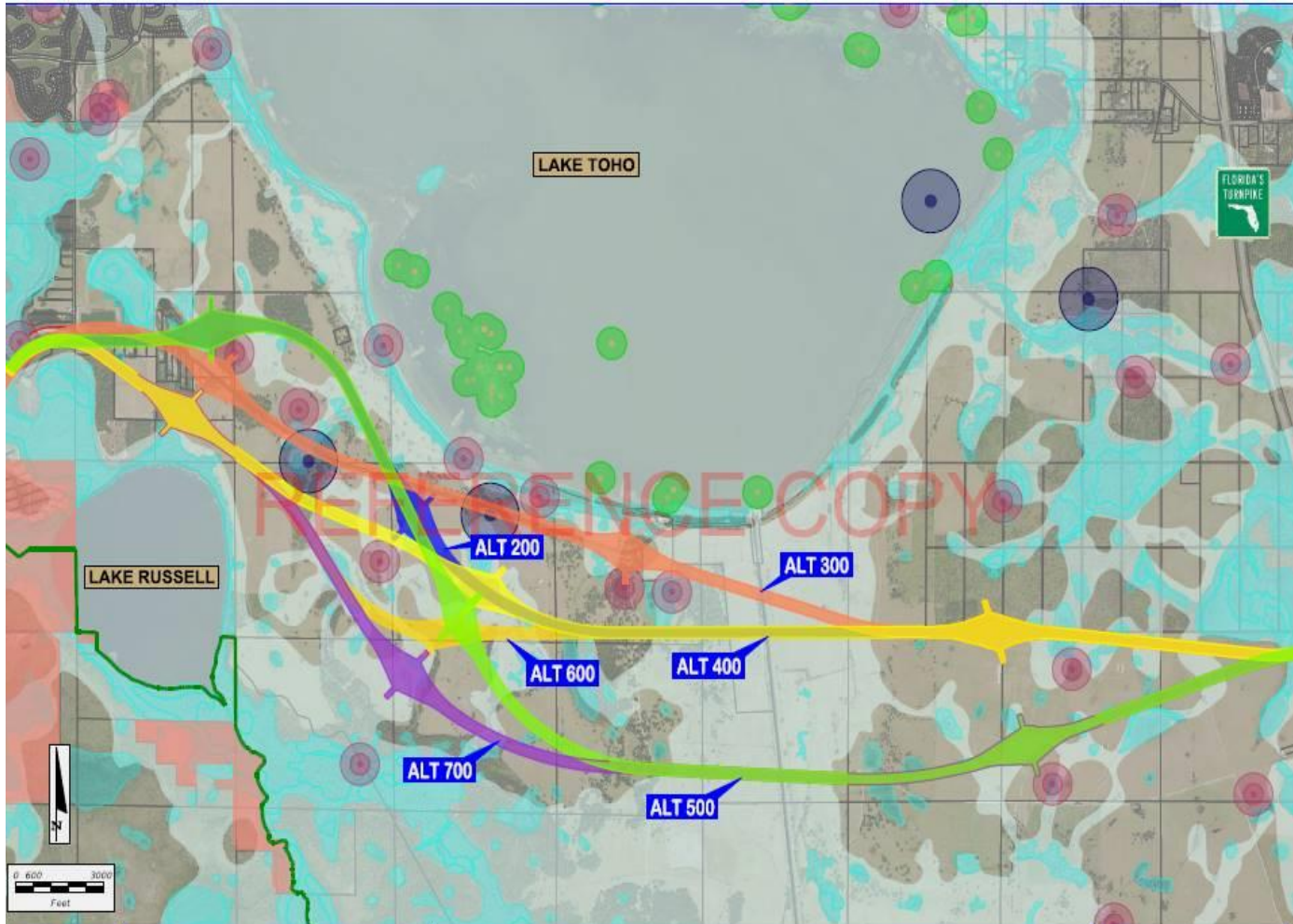
**CHAMPIONS GATE (CR 5  
 DDI IMPROVEMENT OPT.**

# Southport Connector Cypress Parkway Segment

CFX has now adopted an updated study for Southport Connector into their official work plan



# Southport Connector Turnpike Segment

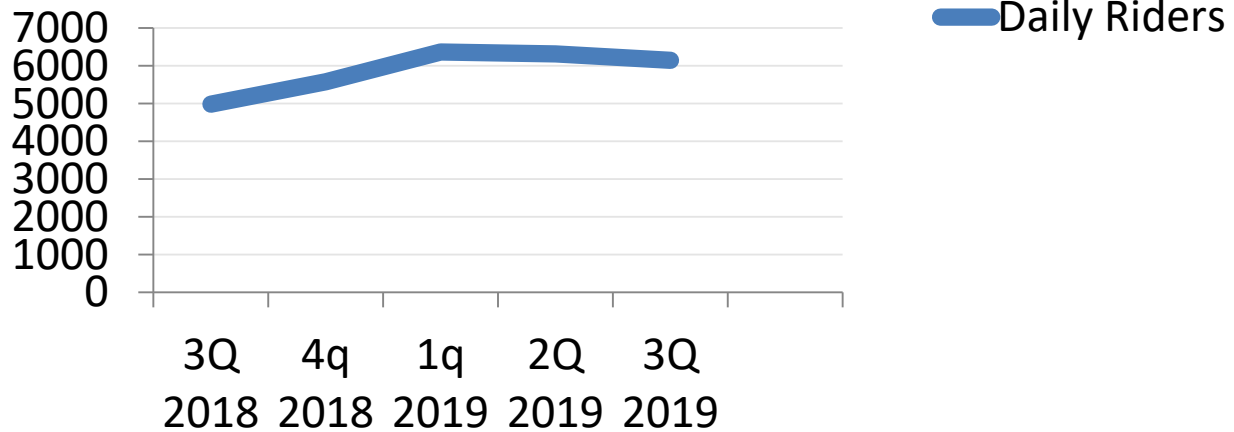


<p>CENTRAL FLORIDA EXPRESSWAY AUTHORITY</p>	<p>Southport Connector Expressway Poinciana Parkway to Florida's Turnpike Concept Feasibility and Mobility Study</p>	<p>Legend</p> <ul style="list-style-type: none"> <li>Existing RW (Red dashed line)</li> <li>Parcel Lines (Black solid line)</li> <li>Disney Wilderness Preserve (Green solid line)</li> <li>Wetlands (Light blue shaded area)</li> <li>Conservation (Pink shaded area)</li> <li>Floodplain (Light blue shaded area)</li> <li>Bald Eagle Nest (Red circle with dot)</li> <li>Caracara Nest (Blue circle with dot)</li> <li>Snail Kite Nest (Green circle with dot)</li> </ul>	<p>Figure E.2: Southport Connector Alternatives East of Reedy Creek</p>
---	--	--	---





### SunRail Daily Ridership by Quarter





## Lynx Bus Route To Poinciana SunRail Station

**Pleasant Hill/John Young PKWY intersection improvements**

**Poinciana Blvd/Reeves Road Intersection Improvements**

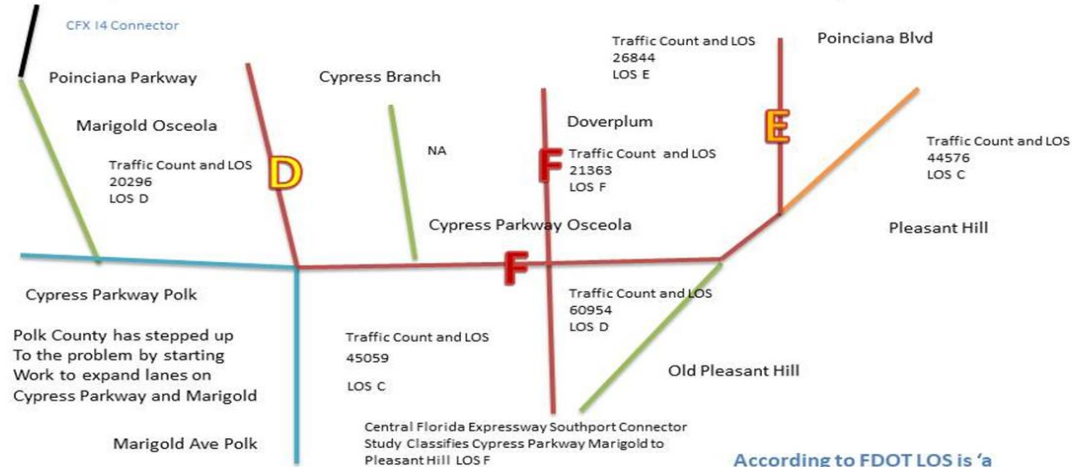
**FDOT safety studies for Marigold Koa, Peabody and San Lorenzo**

**Signal added at Pleasant Hill/Eagle Lake**

**Sidewalks added at Bellago Academy, Deerwood and KOA Schools**

# Polk County has approved expansion Of Marigold and Cypress Parkway

## Poinciana Roads and Traffic Levels of Service



According to FDOT LOS is 'a quantitative Stratification of the 'quality of service' of A service or facility into six letter grade levels With 'A' describing the highest quality and 'F' describing the lowest quality.

The Poinciana Osceola Cypress Parkway Section and tributaries show LOS of D, E and F

*If my kids or grandkids came home with those grades they would be in trouble*

