



Poinciana-Area CFX Projects

PRFSC

— June 16, 2021 —

Dana Chester, PE, CFX Manager of Engineering
Ralph Bove, Volkert, Inc.

About CFX

- 125 miles of expressway



- Orange, Osceola, Seminole, Lake, Brevard

- All CFX operations are funded by tolls – no taxes

- \$3.2 Billion 5-Year Work Plan



Planned Projects In The Poinciana Area

- Southport Connector PD&E Study
- SR 538 Poinciana Parkway Widening
- SR 538 Poinciana Parkway Extension
- CR 532/Osceola Polk Line Road Widening



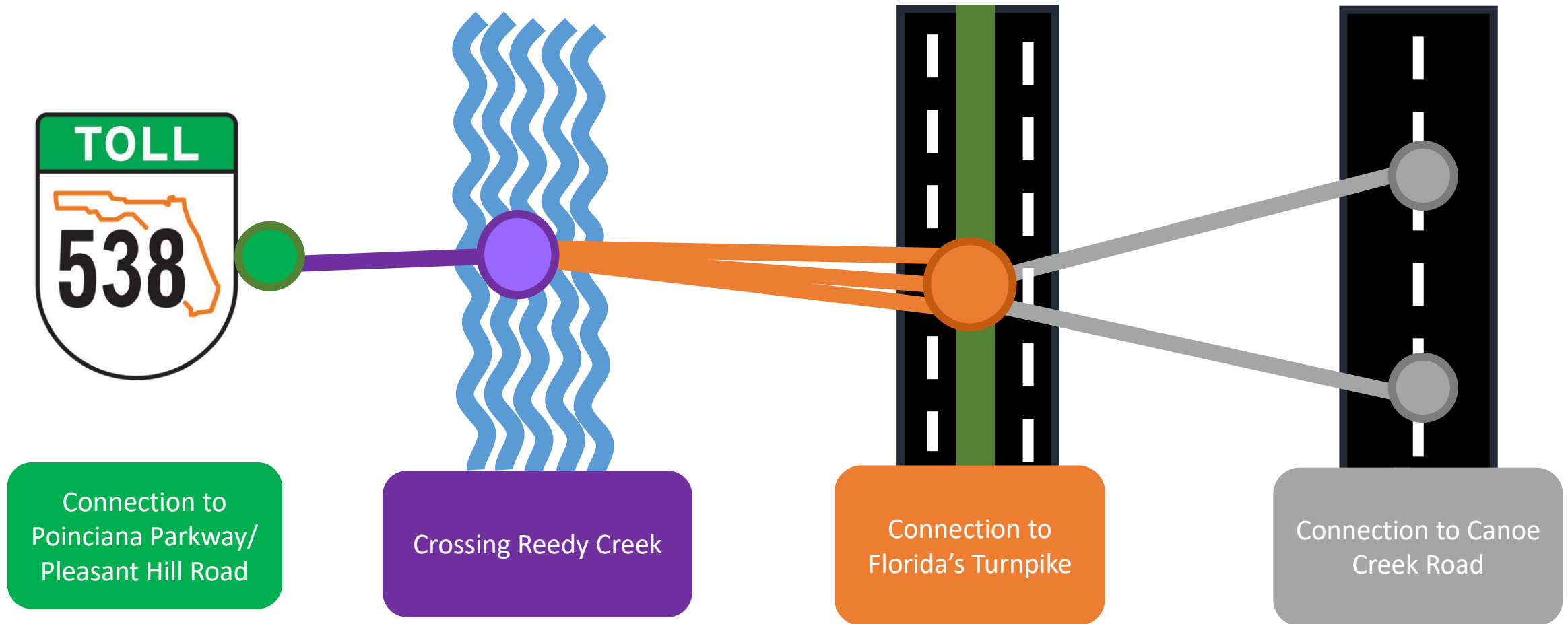
Southport Connector PD&E Study

Southport Connector PD&E Study:

Goals and Objectives

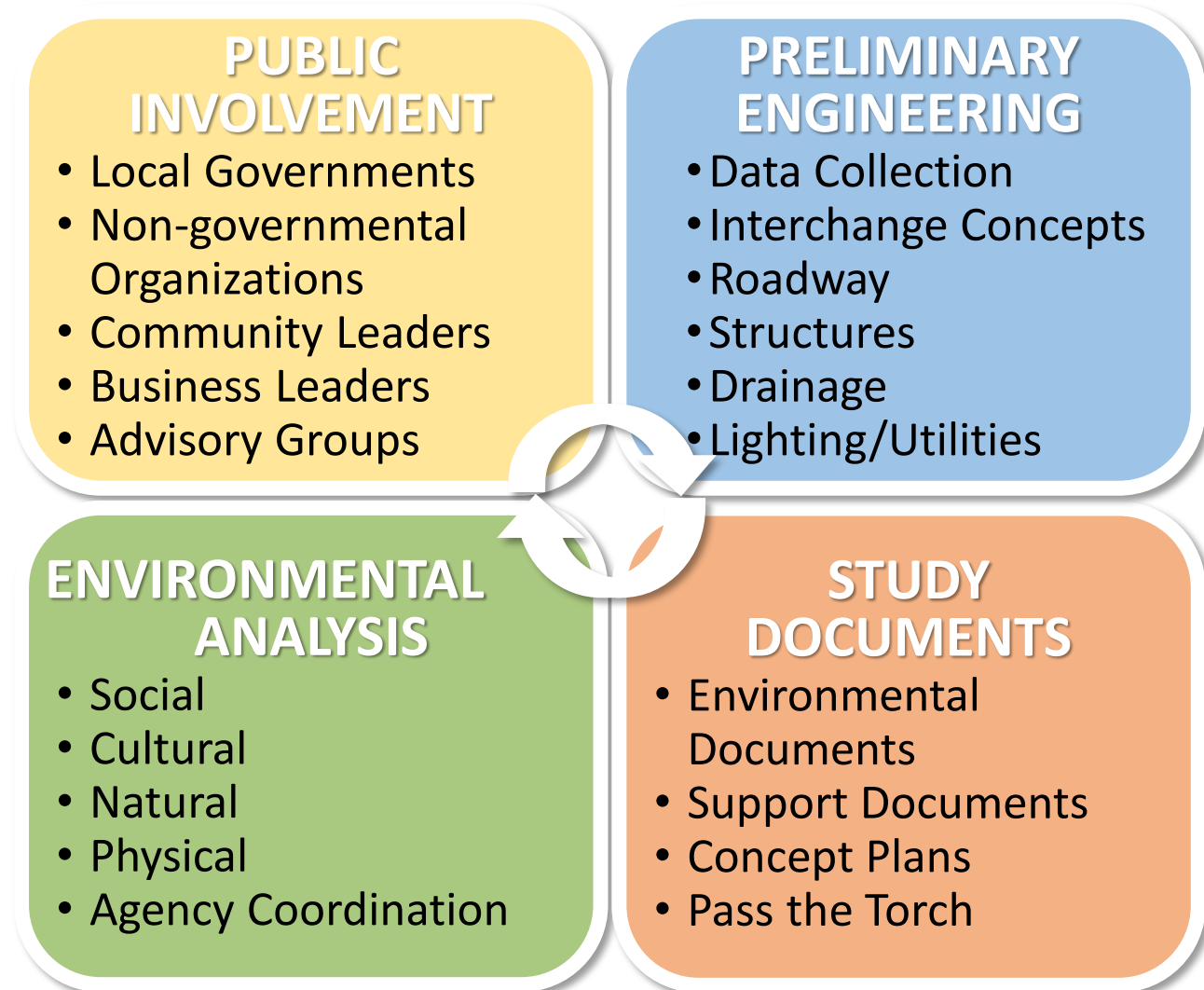
- Improve connections to existing corridors
- Enhance mobility of growing population and economy
- Relieve capacity constraints along Cypress Parkway
- Accommodate future transit options
 - Local, state and regional plans
 - Close coordination with future land use development
- Promote regional connectivity
- Enhance evacuation and emergency service

Southport PD&E Study: Decision Points

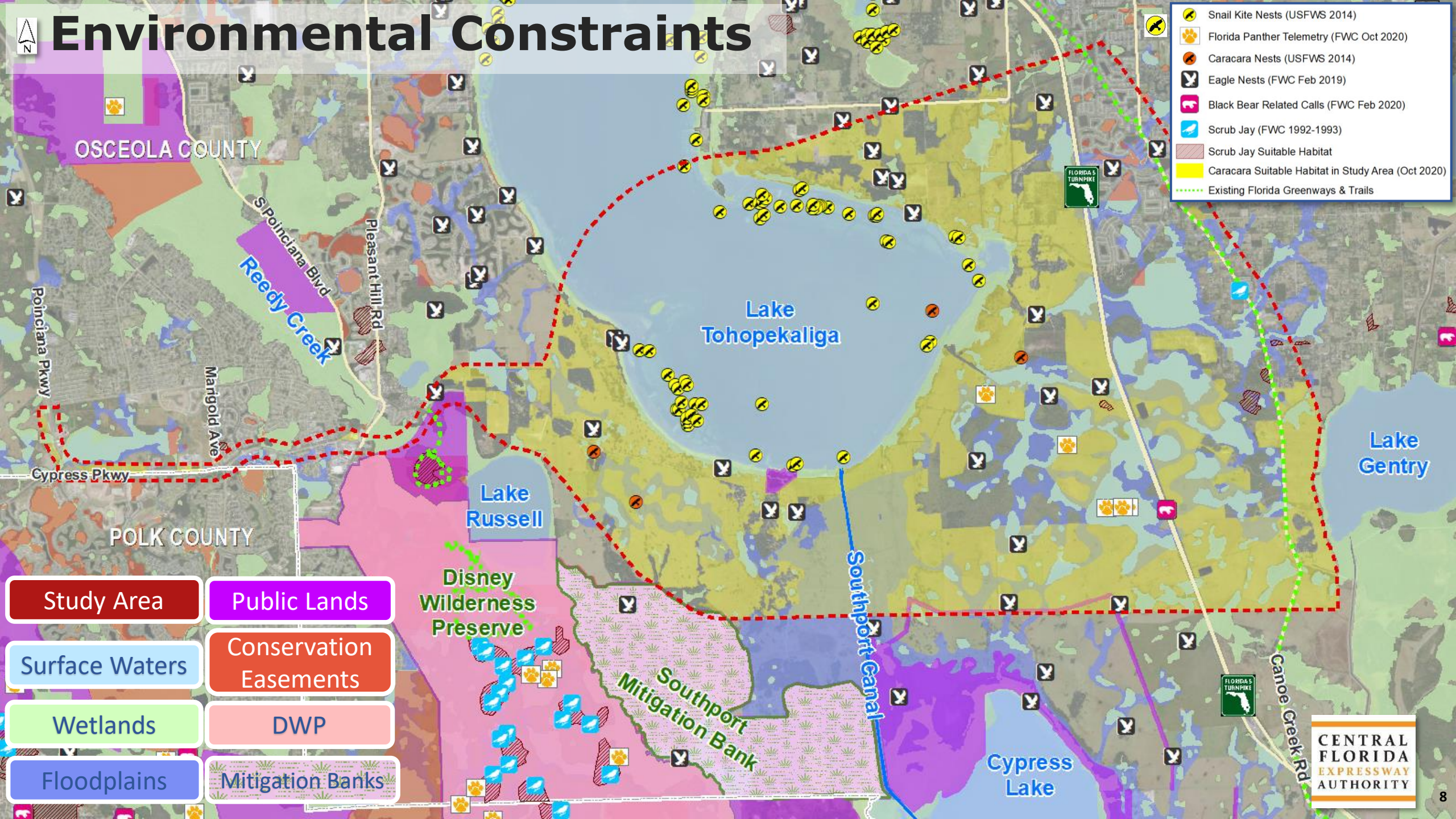


Southport PD&E Study Process

- Public Involvement
- Engineering Analysis
- Environmental Analysis
- Study Documents

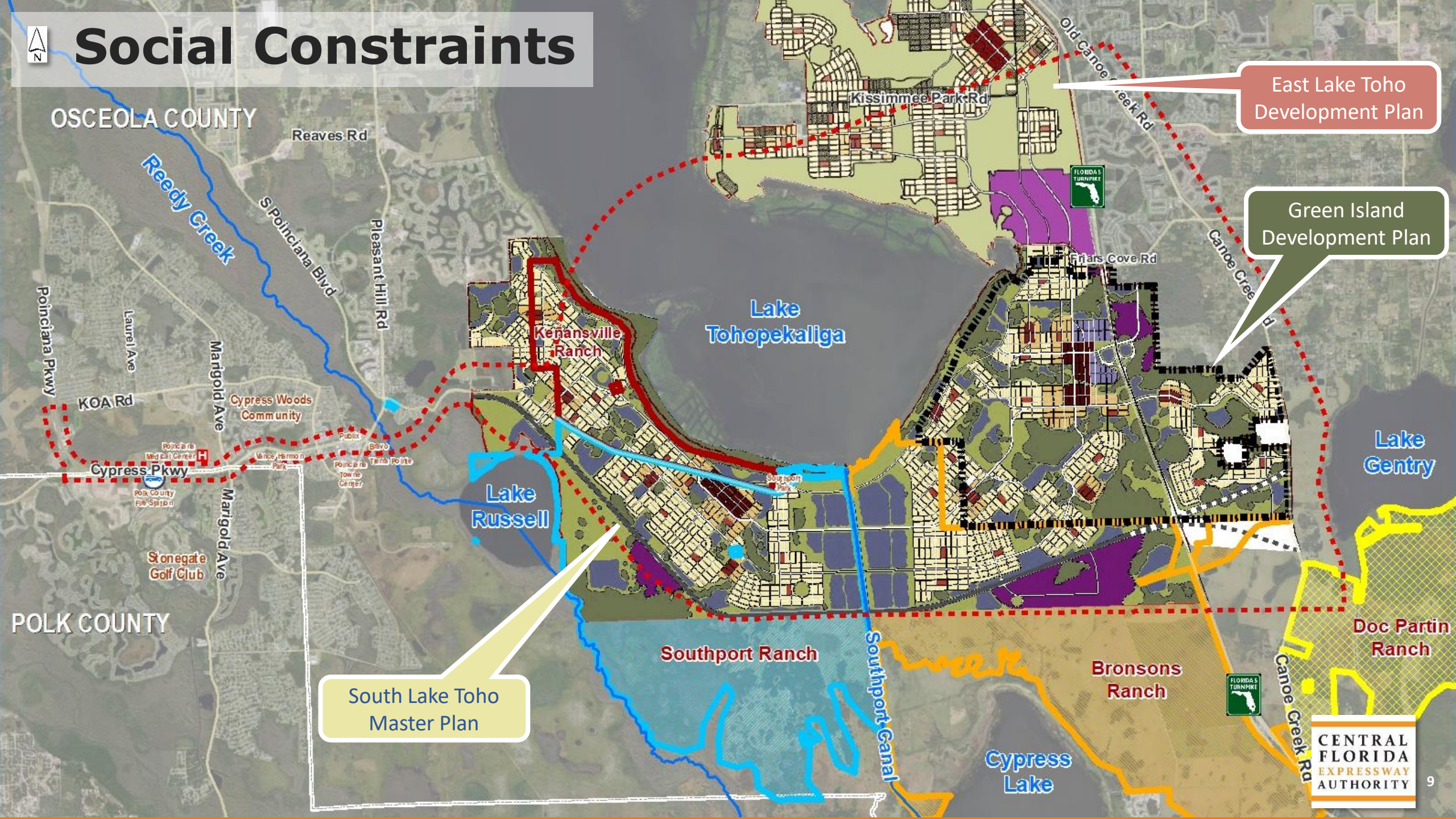


Environmental Constraints



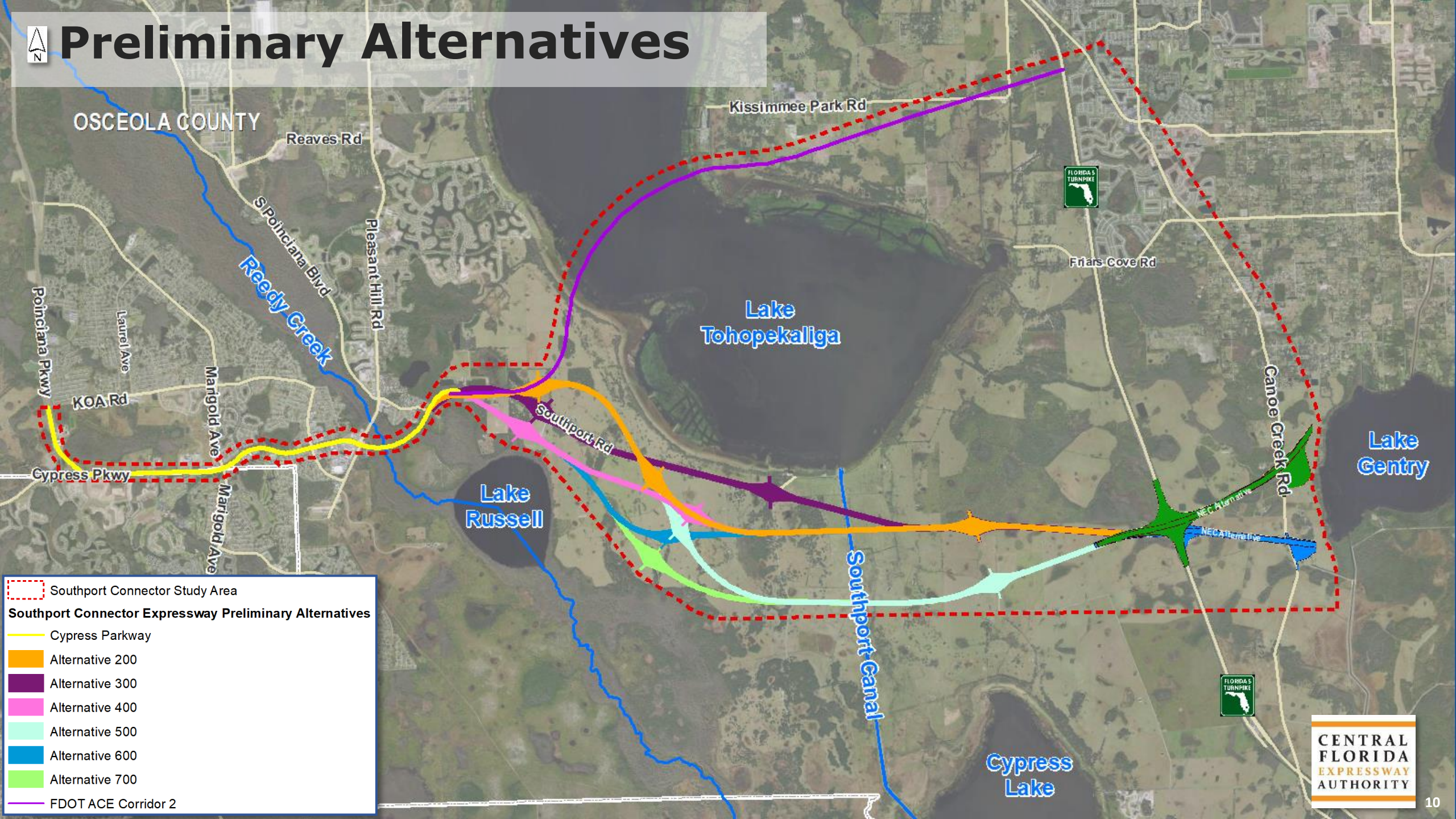


Social Constraints





Preliminary Alternatives



OSCEOLA COUNTY

Reaves Rd

Kissimmee Park Rd



Friars Cove Rd

Lake Tohopekaliga

Lake Gentry

Lake Russell

Cypress Lake




Canoe Creek Rd





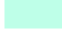


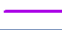
Southport Rd

Southport Canal

NEC Alternative
NEC Alternative

 Southport Connector Study Area

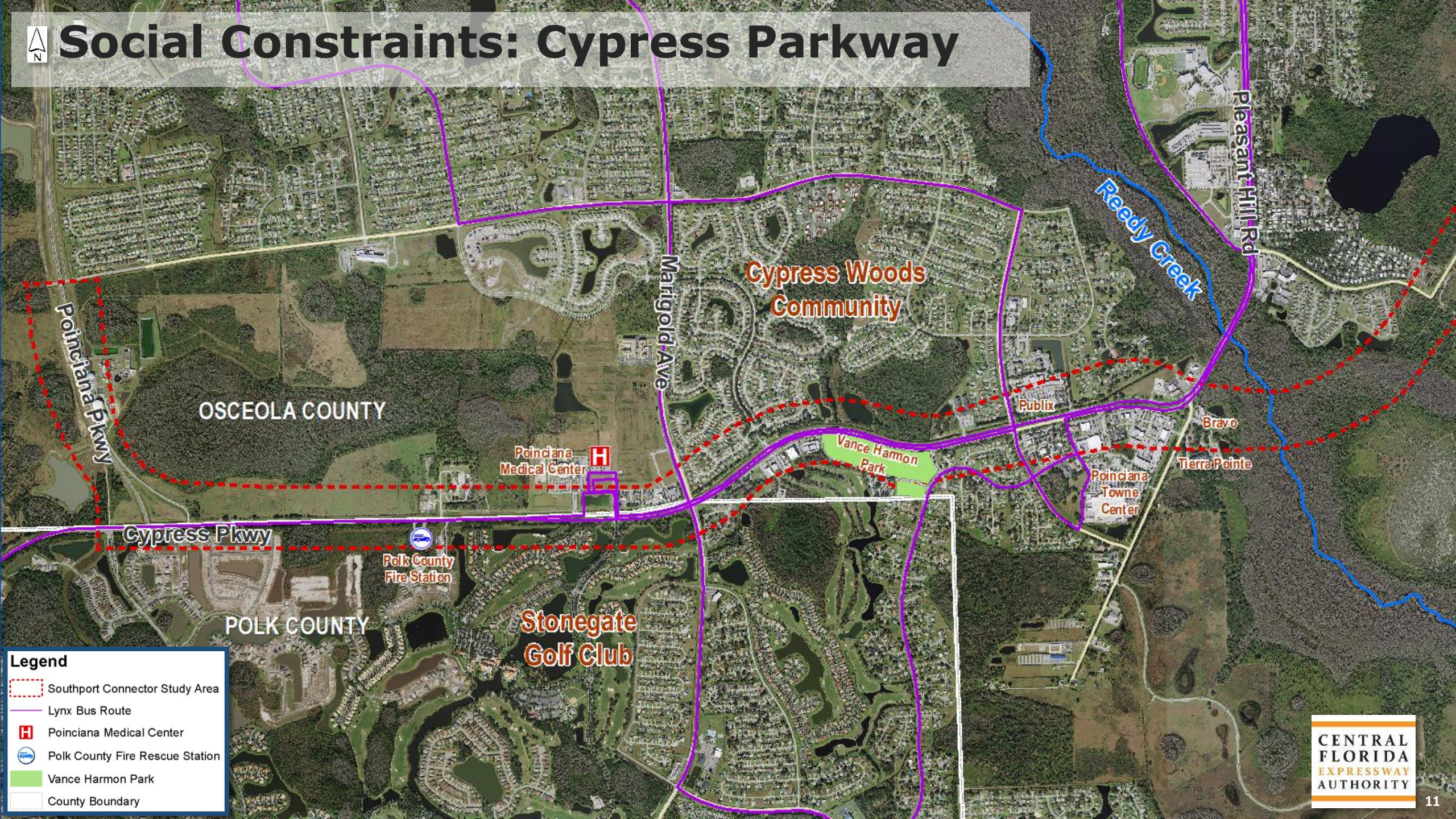
Southport Connector Expressway Preliminary Alternatives

-  Cypress Parkway
-  Alternative 200
-  Alternative 300
-  Alternative 400
-  Alternative 500
-  Alternative 600
-  Alternative 700
-  FDOT ACE Corridor 2





Social Constraints: Cypress Parkway

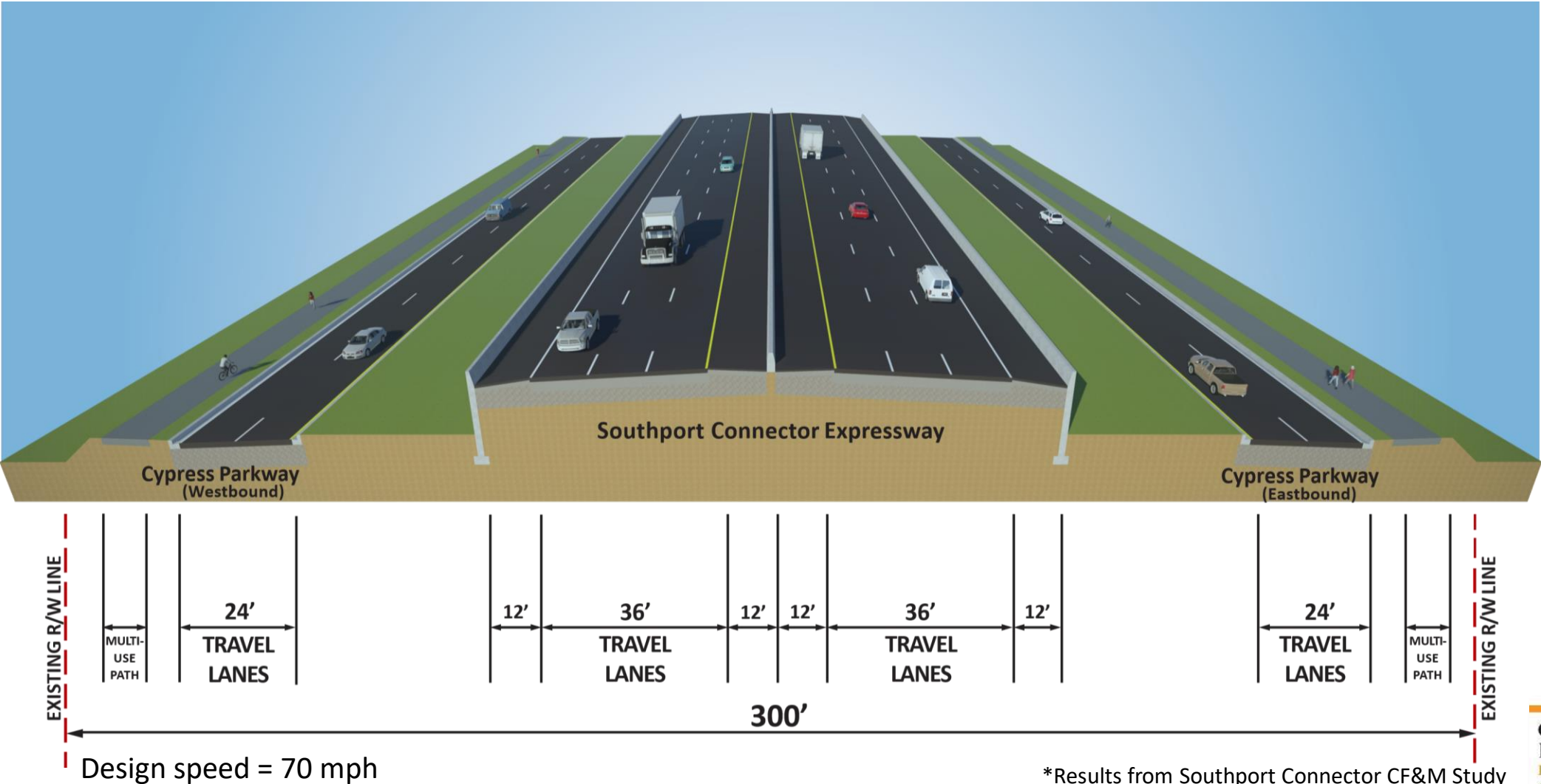


Legend

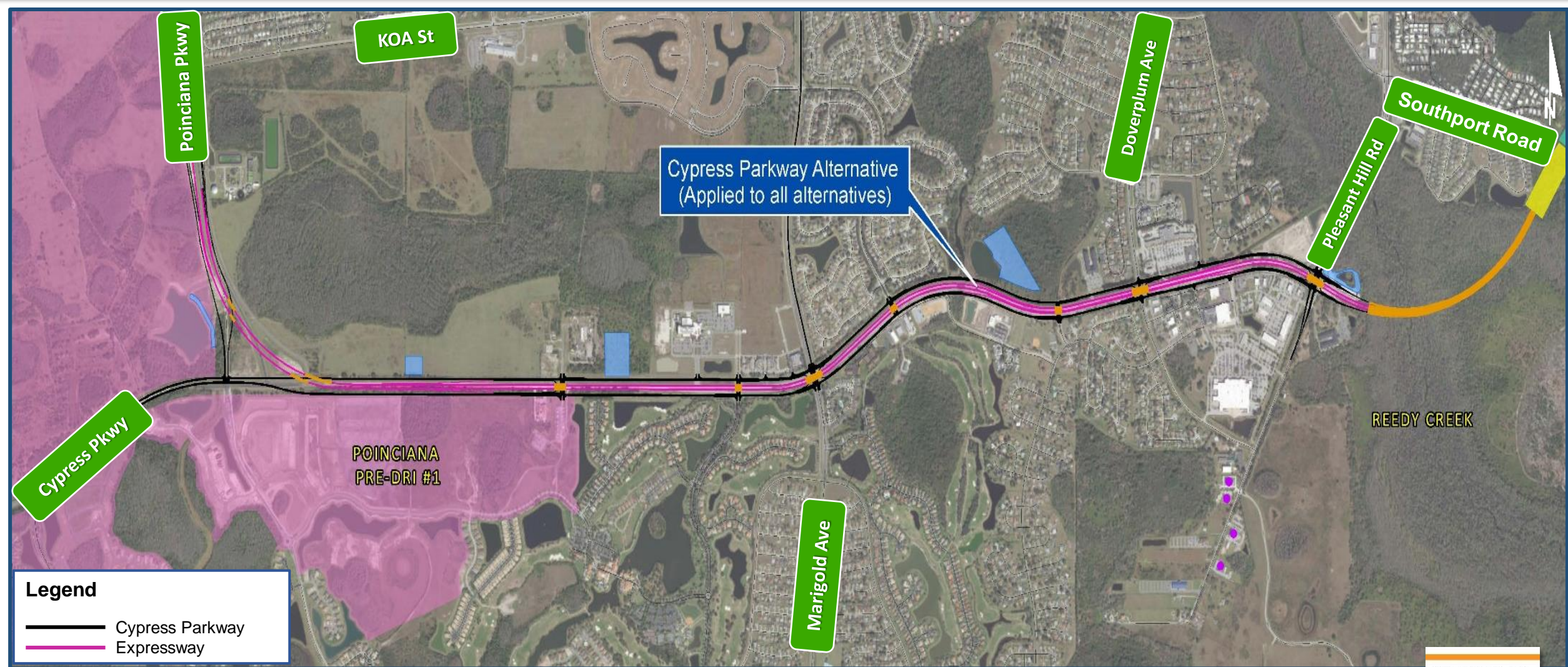
- Southport Connector Study Area
- Lynx Bus Route
- Poinciana Medical Center
- Polk County Fire Rescue Station
- Vance Harmon Park
- County Boundary

Conceptual Rendering

Poinciana Parkway to Pleasant Hill Road



Cypress Parkway Segment

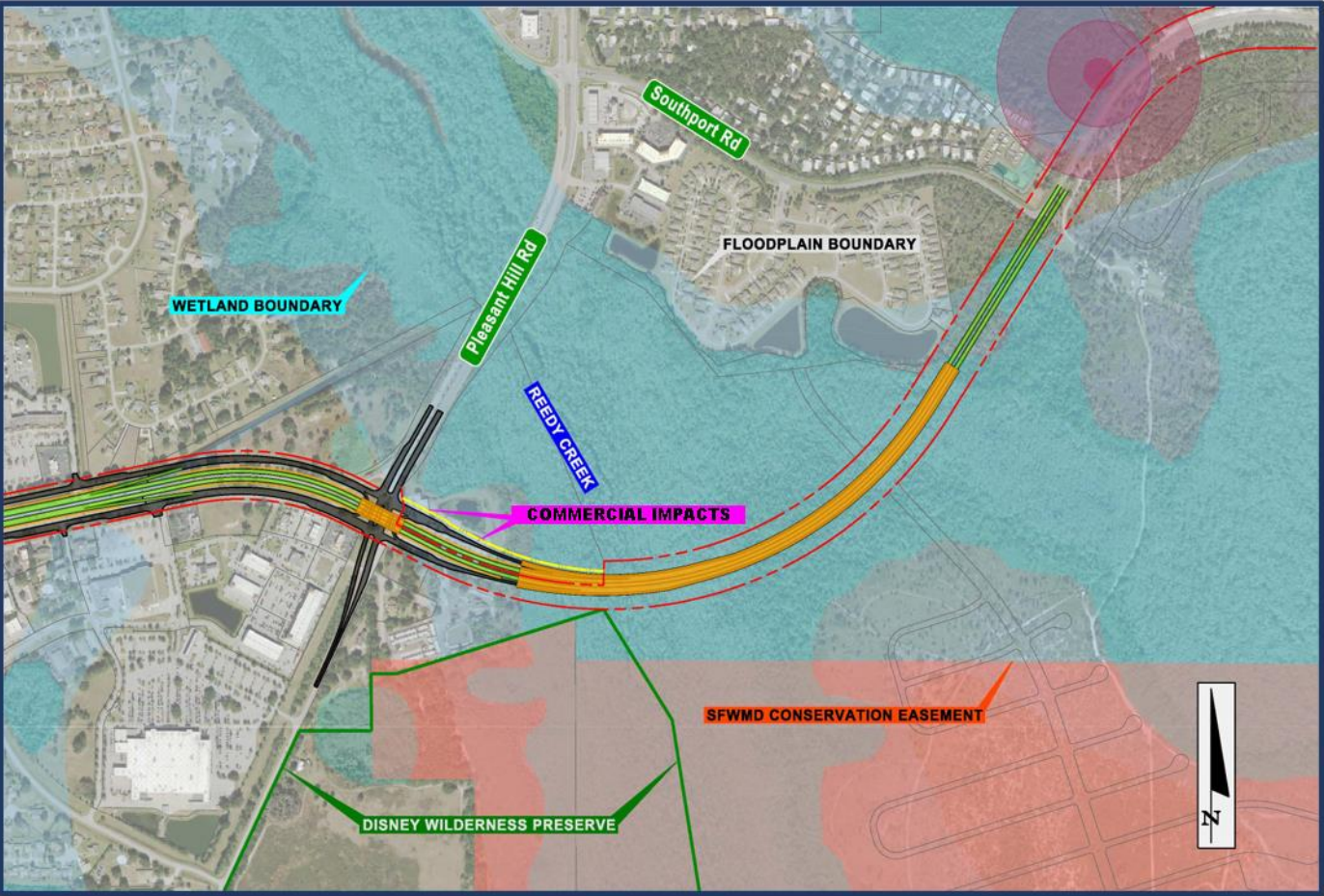


*Results from Southport Connector CF&M Study

Preliminary: Subject to Change

East of Pleasant Hill Road

Key Issues: Environmental/Cultural



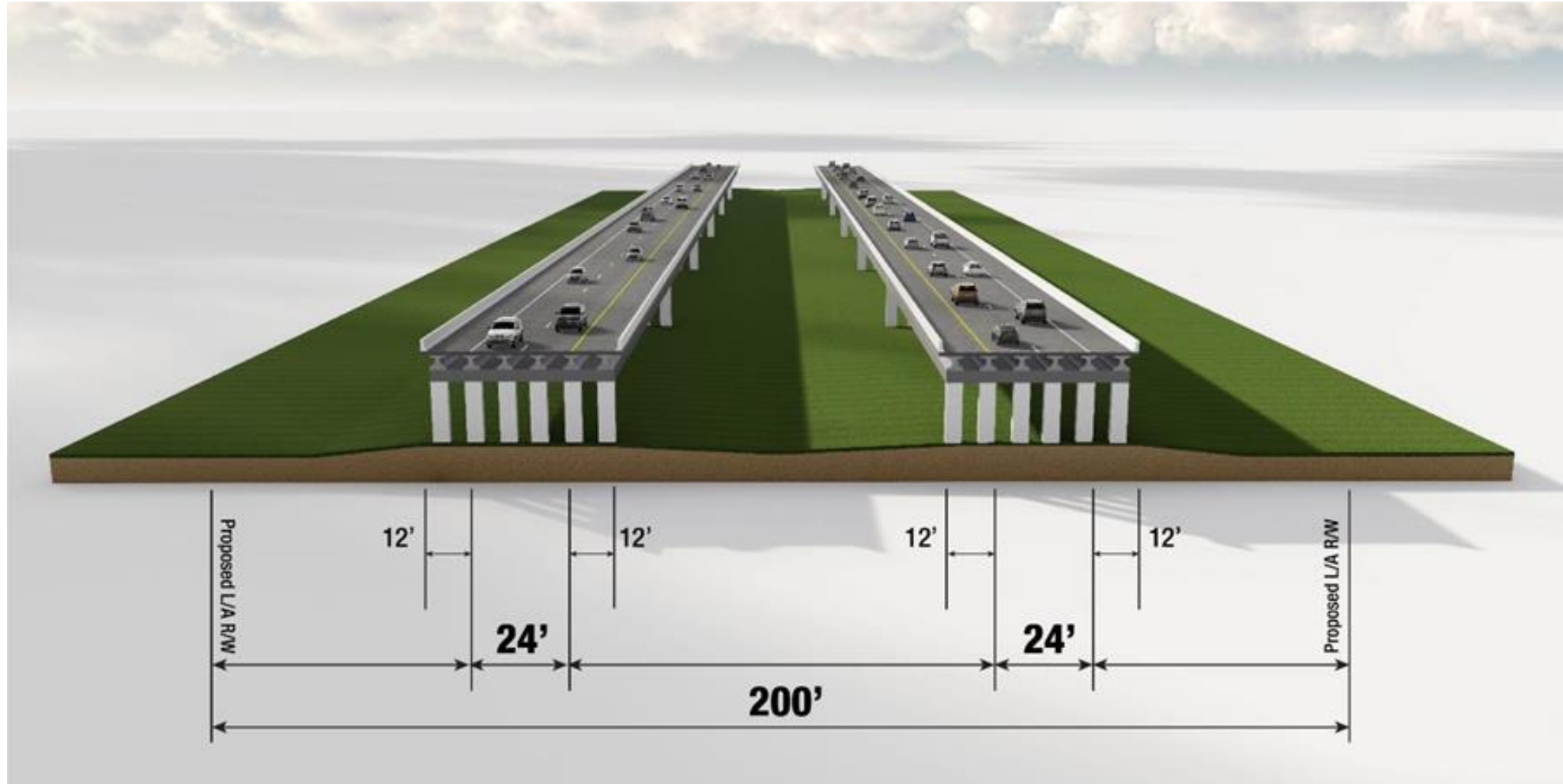
*Results from Southport Connector CF&M Study

Preliminary: Subject to Change



Typical Section - Reduced

East of Pleasant Hill Road to end of Reedy Creek Bridge

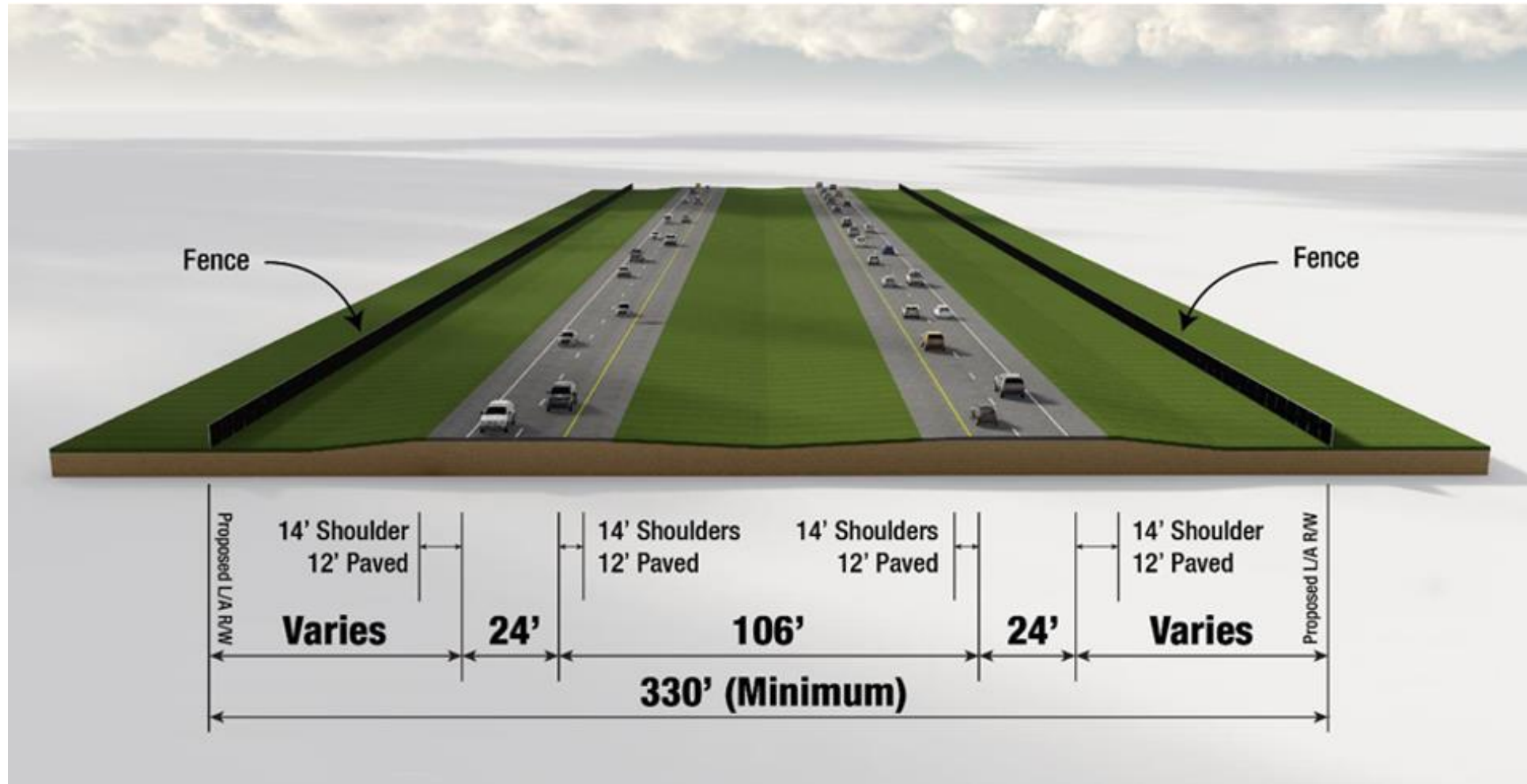


Design speed = 70 mph

*Results from Southport Connector CF&M Study

Typical Section

East of Reedy Creek Bridge to Canoe Creek Road



Design speed = 70 mph

*Results from Southport Connector CF&M Study

Southport Connector PD&E Study: Next Steps

- Study began: Aug. 2020
- Study Area Revised: Feb. 2021
- Kickoff mailing: May 2021
- **Alternatives Workshop: Oct. 2021**
- **Public Hearing: Mar. 2022**
- **Board Presentation: June 2022**

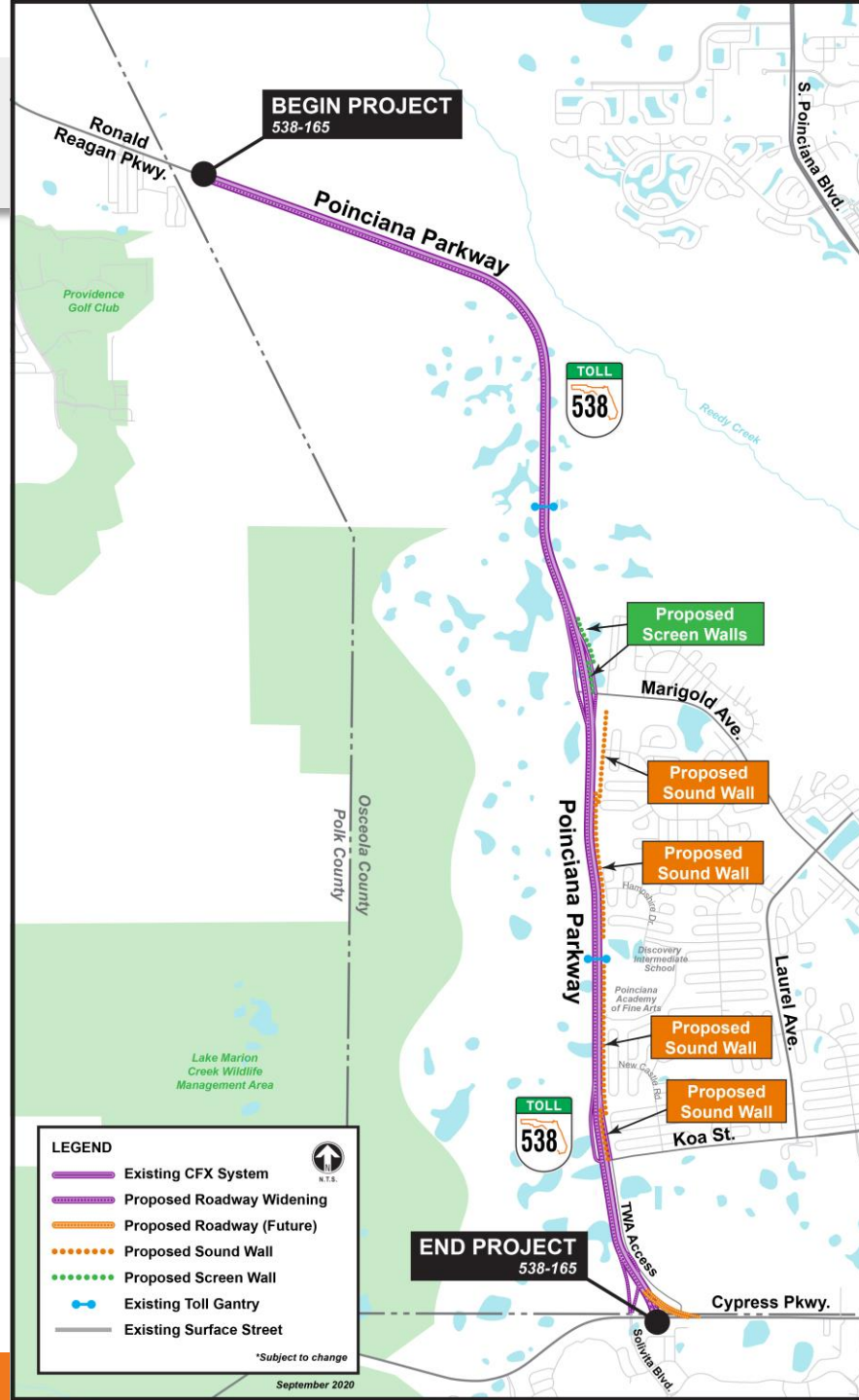


A large red lattice boom crane is lifting a tall, slender concrete pier into place. The pier has red safety markings. To the right, another similar pier stands upright. In the background, a dense line of green trees is visible under a clear blue sky. On the left, a concrete bridge structure is partially visible. In the foreground, a white pickup truck and a black truck are parked on a dirt area.

SR 538/Poinciana Parkway Widening Project

Ronald Reagan Parkway to CR 580/Cypress Parkway

- Construction began in spring 2021
- Completion expected in fall 2023
- Widening 7.2 miles
- Four proposed sound walls



Marigold Avenue Interchange

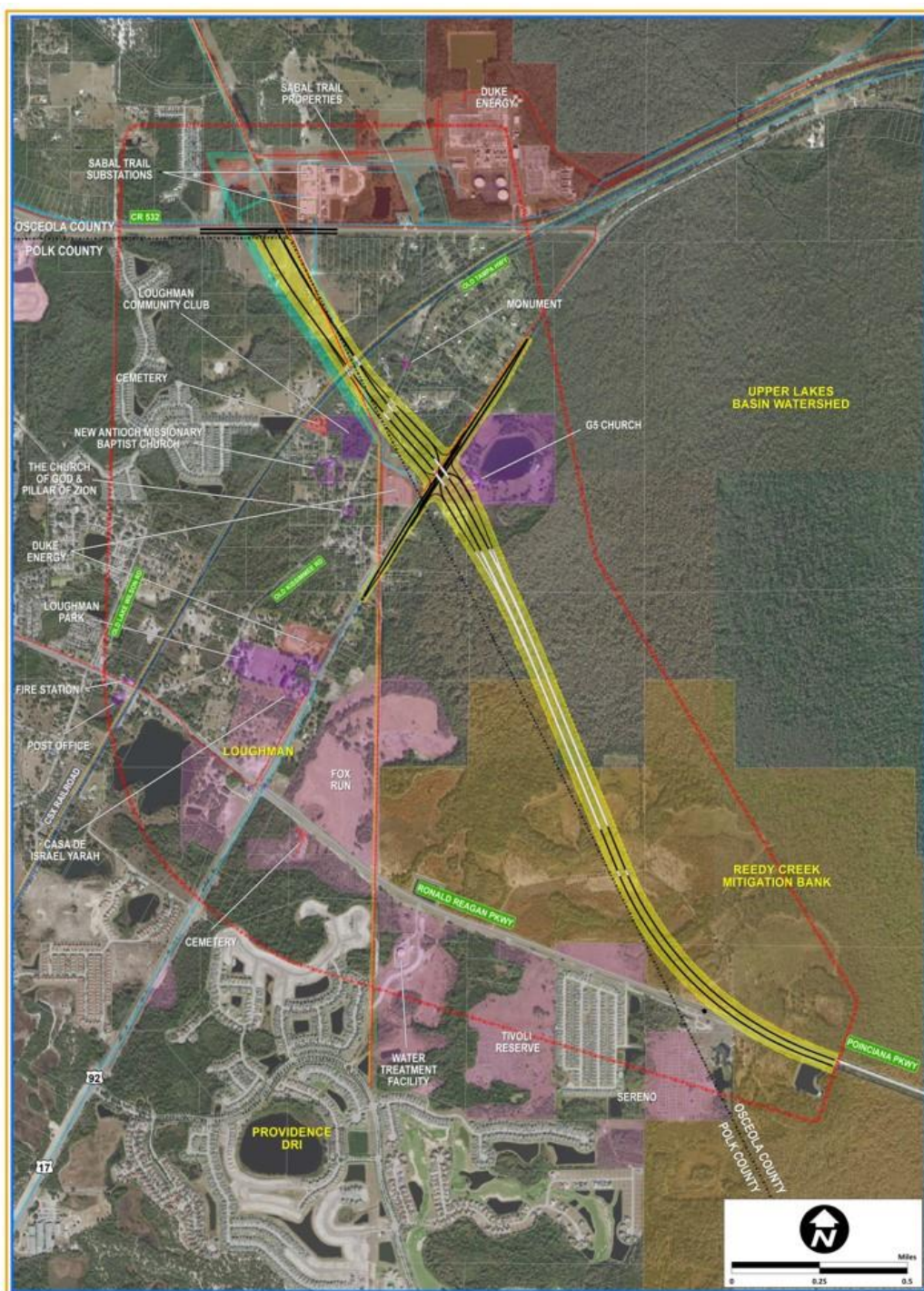




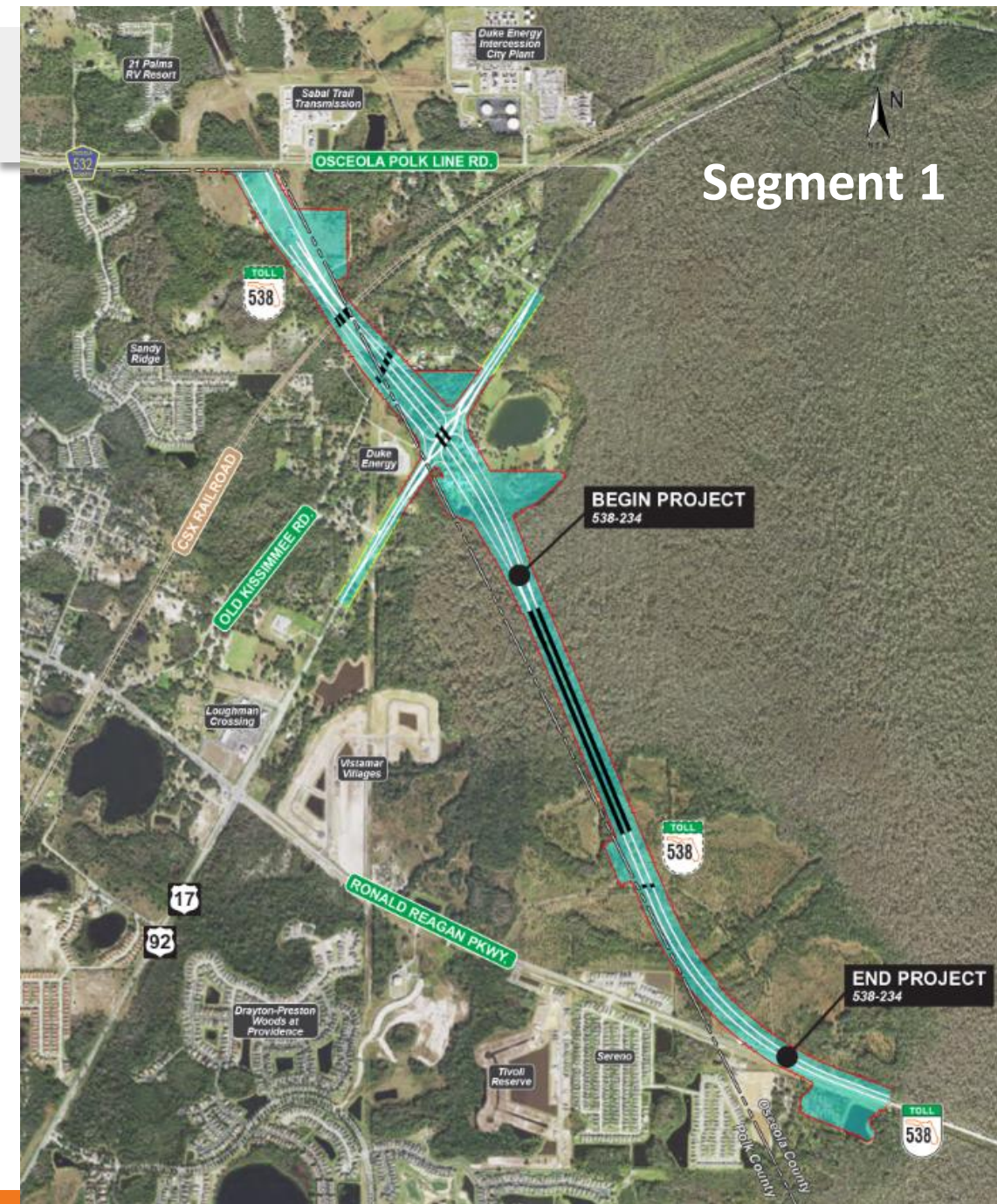
SR 538/Poinciana Parkway Extension

SR 538/Poinciana Parkway Extension

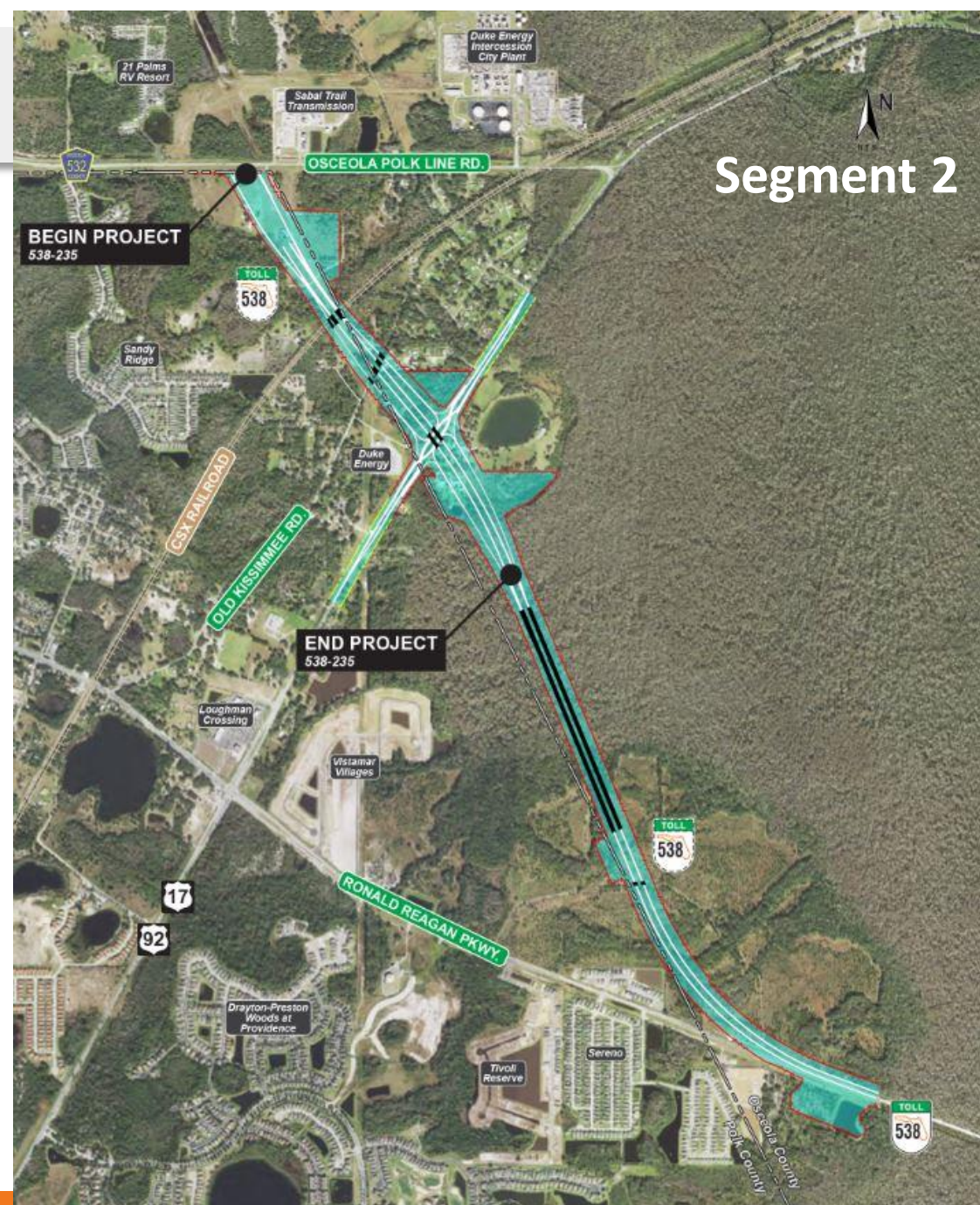
- Design began June 2020
- Two project segments
- Nearly half a mile of bridging over Reedy Creek Mitigation Bank
- Interchanges at US 17/92 and CR 532



Segment 1



Segment 2

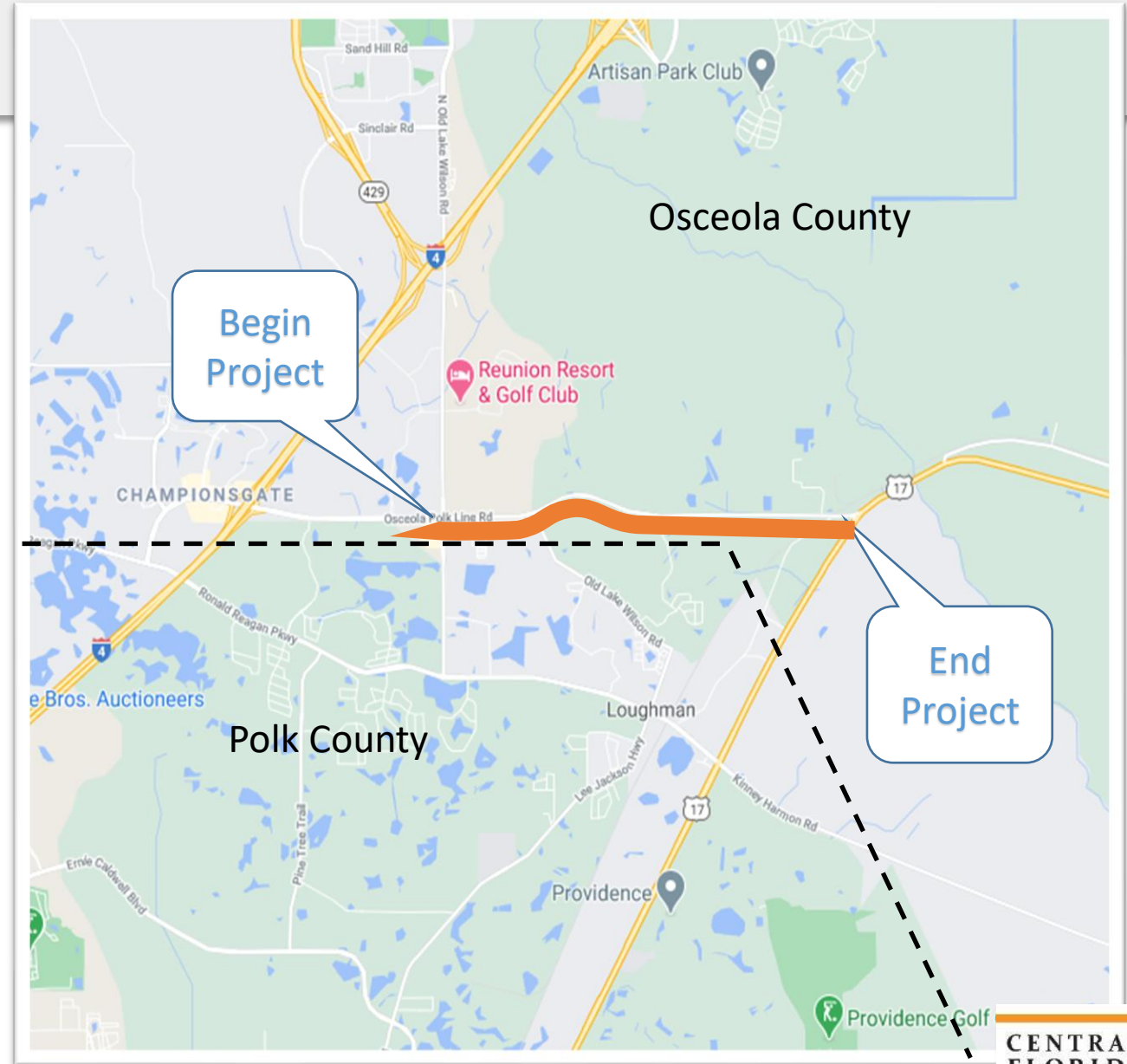




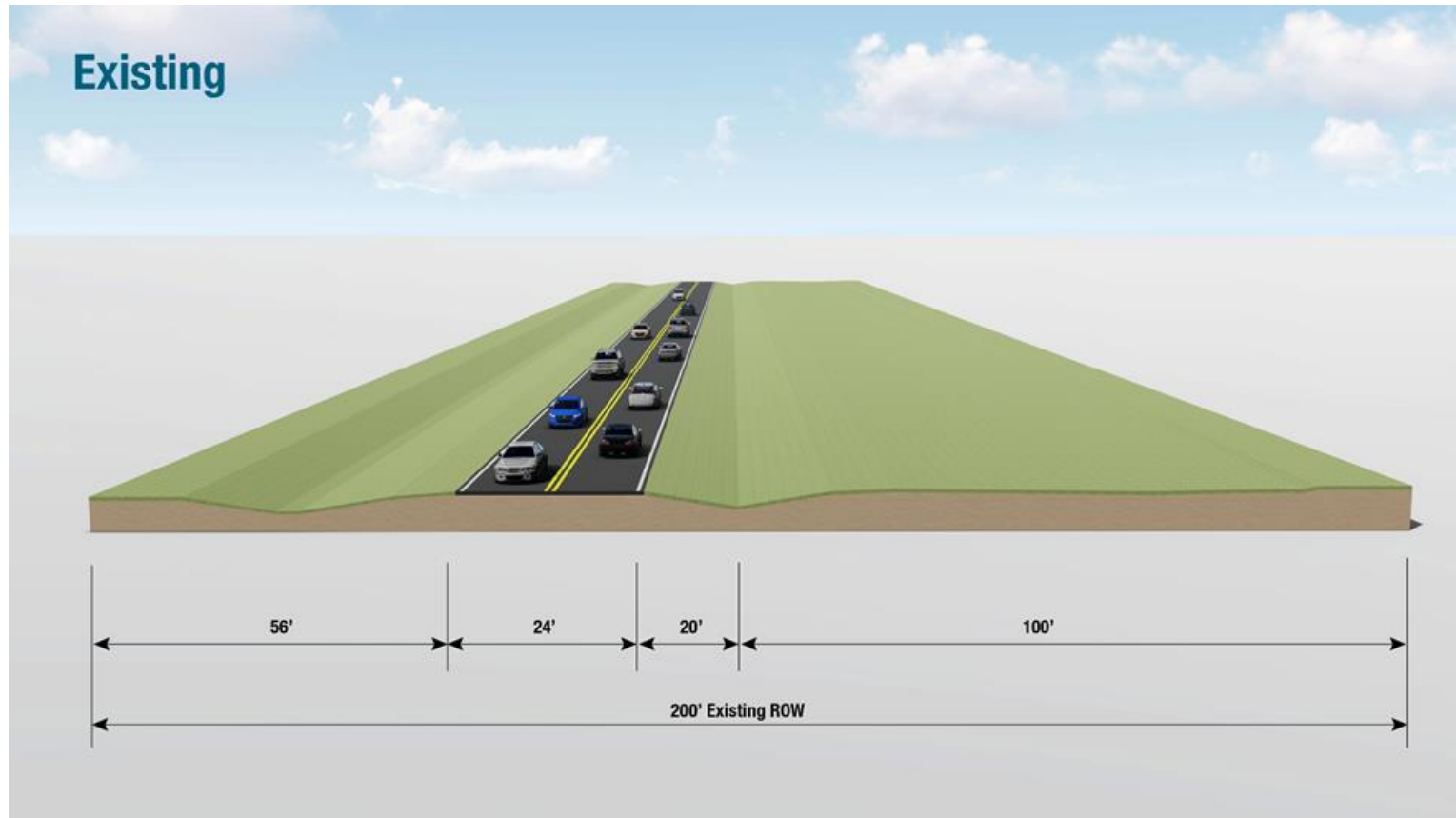
CR 532/Osceola Polk Line Road Widening

CR 532/Osceola Polk Line Road Widening

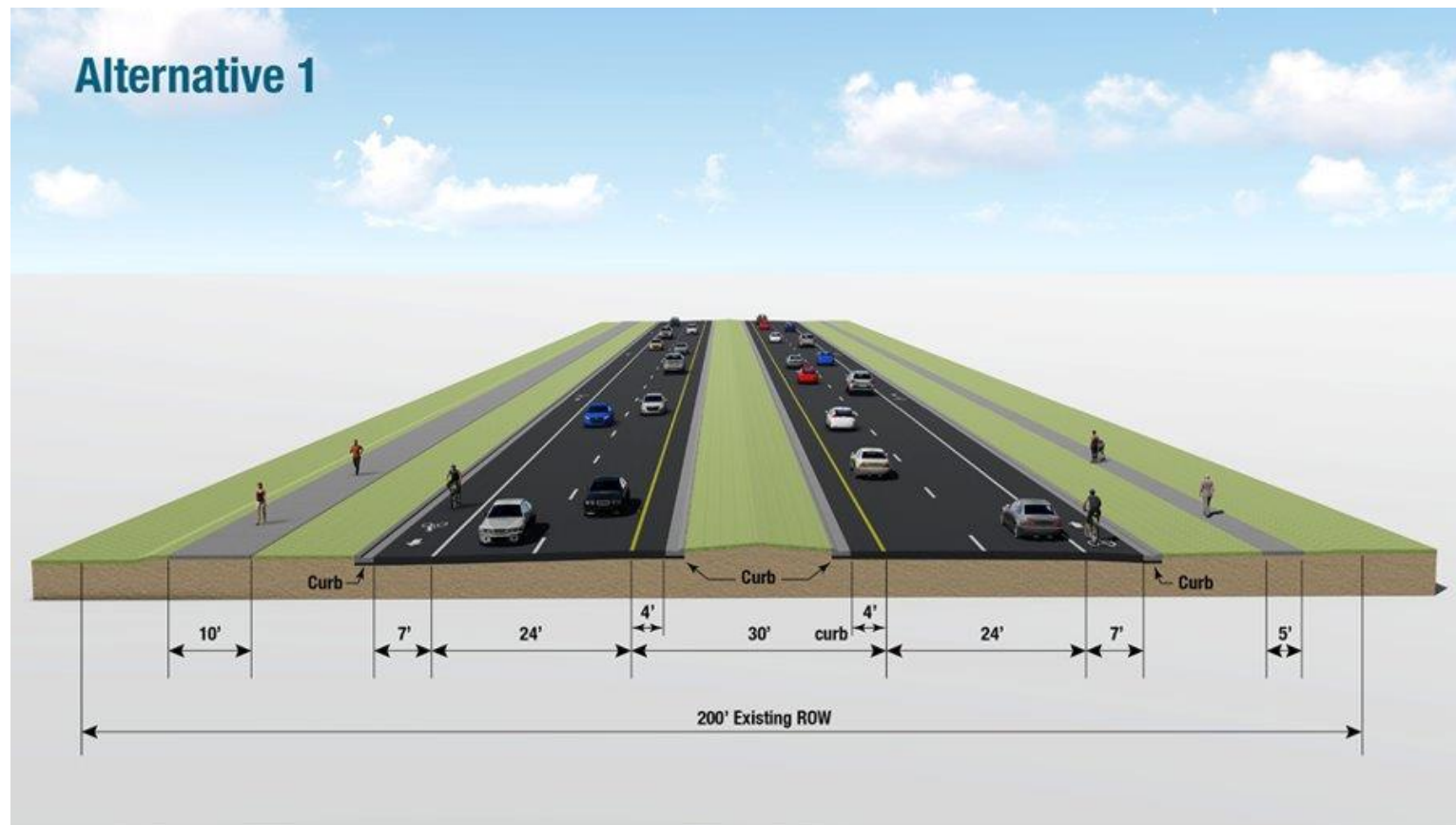
- CR 532 (Osceola Polk Line Road)
 - In Osceola County
 - From S. Old Lake Wilson Road / Lake Wilson Road to US 17/92
- Approximately three miles



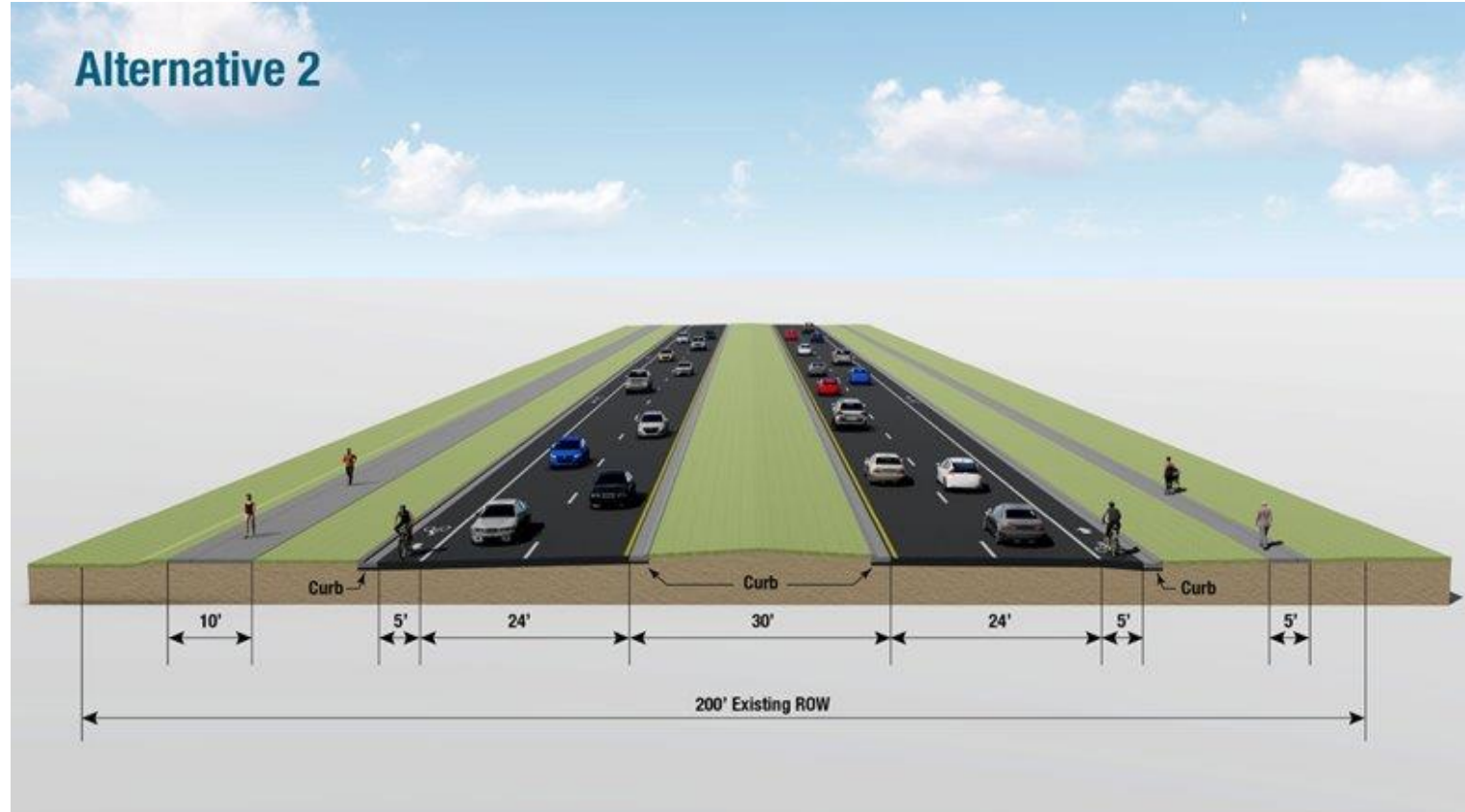
CR 532 Existing Typical Section



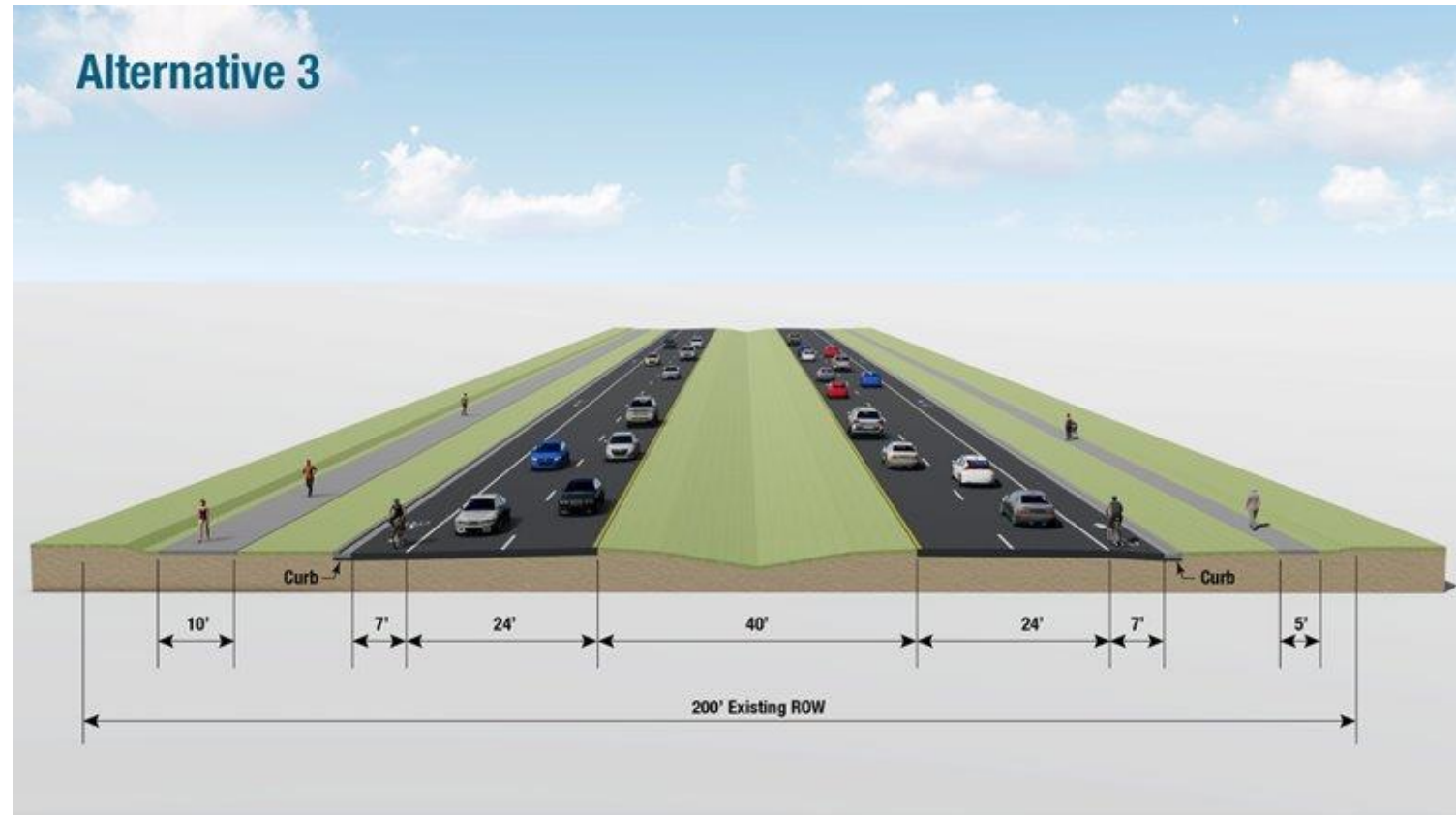
CR 532 Alternative 1 Typical Section



CR 532 Alternative 2 Typical Section

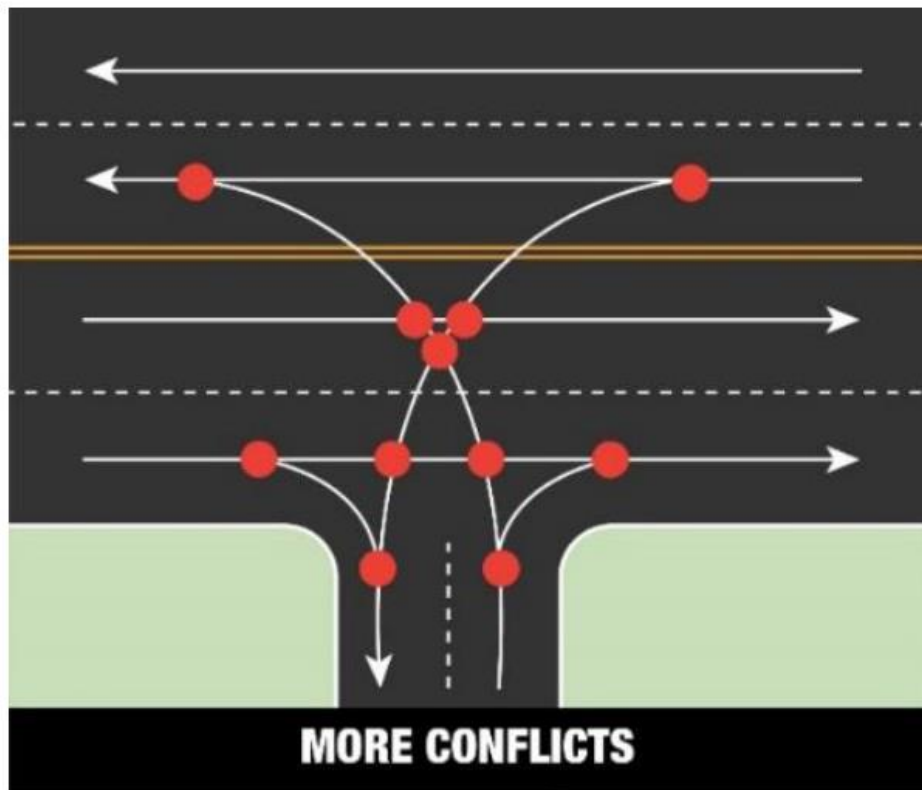


CR 532 Alternative 3 Typical Section

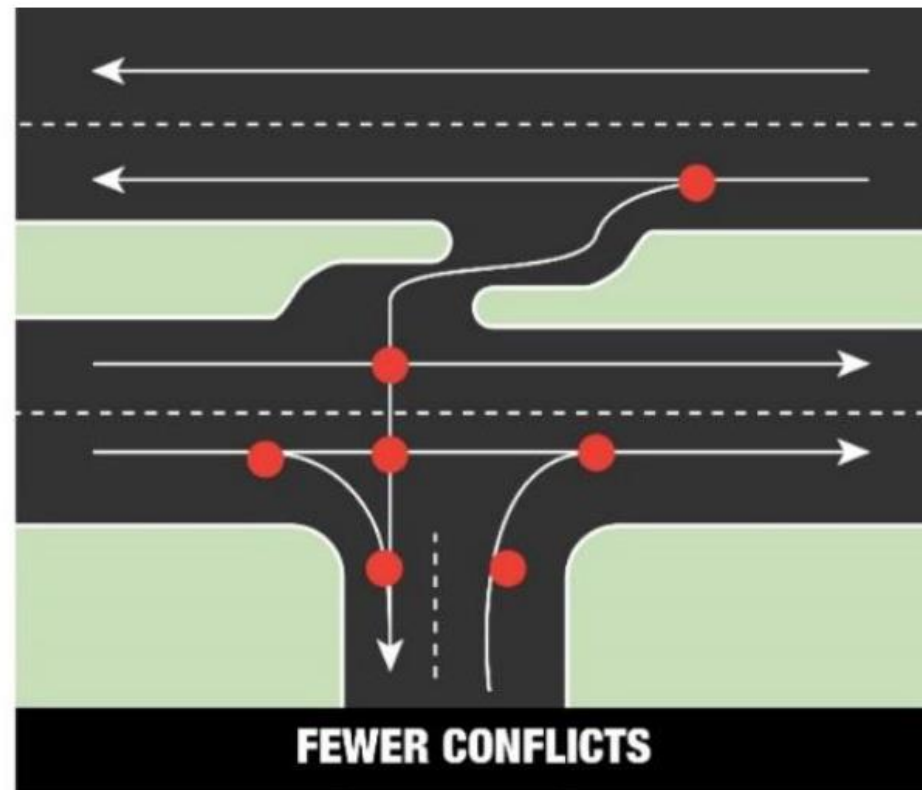


Access Management

Full Access



Directional Median Opening



Source: FDOT

CR 532: DRAFT Access Management Plan

Full Median Opening

- S. Old Lake Wilson Rd./Lake Wilson Rd.
- Old Lake Wilson Road (Polk)
- Sullivan Road
- Sandy Ridge Road
- Poinciana Parkway Extension
- Duke Energy Intercession City Plant Access Drive
- US 17/92

Directional Median Opening

- Tanglewood Drive
- 21 Palms RV Resort Access Drive
- Sabal Trail Access Drive
- Sandy Oak Drive

*Access points (median openings and driveways) are under evaluation and subject to change

CR 532 Widening: Next Steps

- Study began: June 2020
- Public Alternatives Meeting:
May 25, 2021
- **Board presentation: Aug. 2021**
- **Design public meeting: Jan. 2022**
- **Design complete: June 2022**
- **Construction: Early 2023**



CR 532: Other Area Projects



Poinciana Parkway Extension & CR 532 Widening



Poinciana Parkway Extension PD&E Study



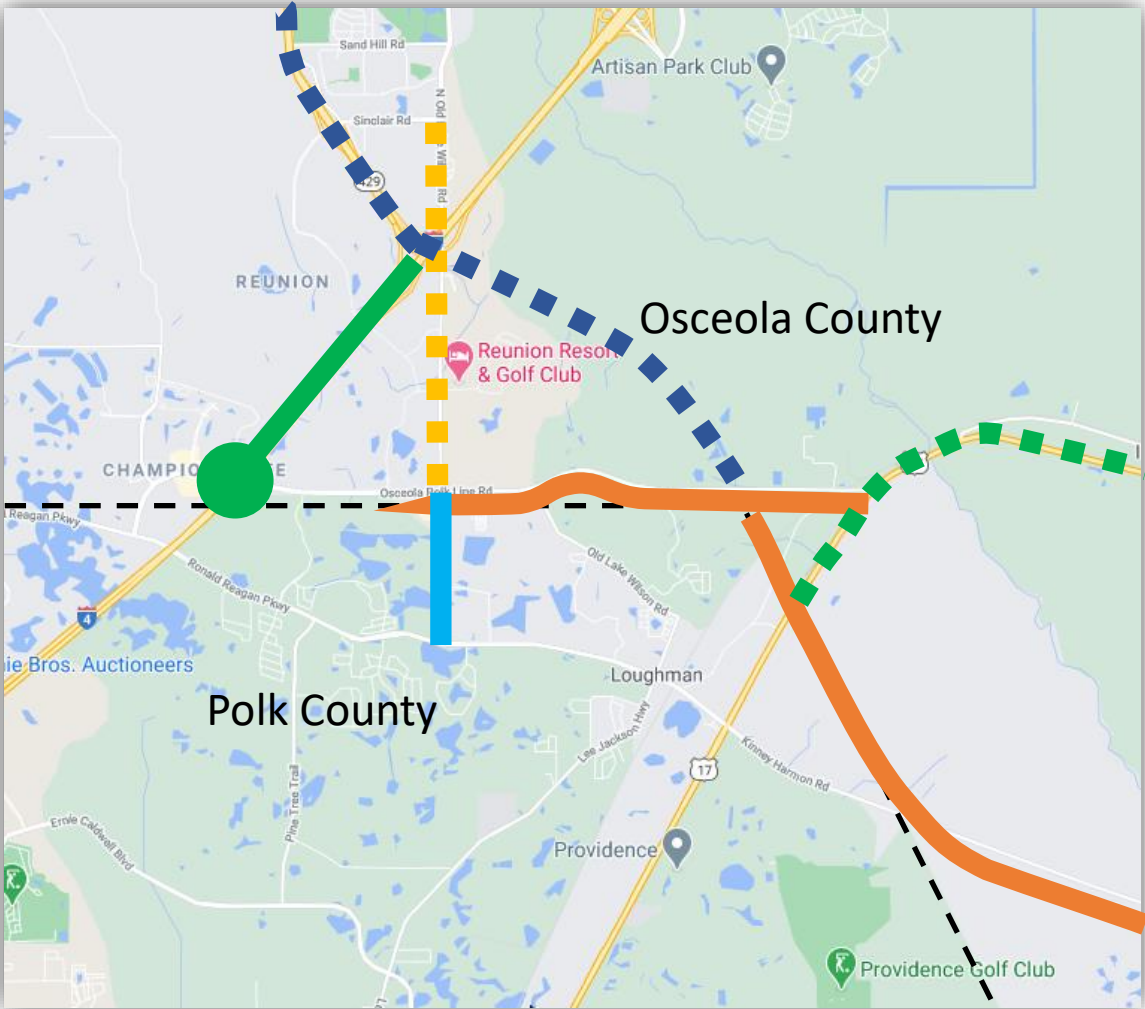
S. Old Lake Wilson Road PD&E Study



Lake Wilson Road Widening



I-4 Improvements & 17/92 Widening PD&E Study



Project Contacts

For more information contact:

- Southport Connector PD&E Study
- CR 532 Widening
- Poinciana Parkway Widening
- Poinciana Parkway Extension

Kathy Putnam
Public Involvement Coordinator
407-802-3210
ProjectStudies@CFXway.com

Kevin Camara
Public Information Officer
407-383-5817
Construction@CFXway.com

CFX web address:
www.CFXway.com



CENTRAL
FLORIDA
EXPRESSWAY
AUTHORITY

THANK YOU!