

# SOUTHPORT CONNECTOR EXPRESSWAY

PROJECT DEVELOPMENT AND ENVIRONMENT STUDY

SUMMER 2021

In August 2020, CFX began a Project Development and Environment (PD&E) Study of the Southport Connector Expressway. The study is determining the feasibility of a proposed limited-access tollway between Poinciana Parkway and Canoe Creek Road in Osceola County.

In March 2021, an alignment crossing Lake Tohopekaliga was added following input from CFX's Environmental Stewardship Committee and the study's Environmental Advisory Group. The study area boundary was expanded to consider this additional alignment. Preliminary alternative concepts under evaluation will be displayed at the Public Information Meeting for your input and comments.

## STUDY DESCRIPTION

The Southport Connector Expressway is a proposed east-west divided four-lane expressway, connecting Poinciana Parkway with Canoe Creek Road. The 15-mile expressway extends from Poinciana Parkway on the west to Canoe Creek Road on the east, including an interchange at Florida's Turnpike.

The 23-month study is developing and evaluating several transportation alignments to identify a preferred alternative, using the results of the previous Concept, Feasibility, and Mobility (CF&M) Study as a foundation. The study area is bounded by Poinciana Parkway on the west continuing east, following along the existing Cypress Parkway corridor to the north and south and crossing Reedy Creek. The northern boundary of the study area runs east of Reedy Creek in a northeast direction across Lake Tohopekaliga to Kissimmee Park Road, crossing the Florida's Turnpike to the Canoe Creek Estates community in St. Cloud. The southern boundary runs east of Lake Russell in a southeast direction along the north edge of the Southport Mitigation Bank, crossing the Florida's Turnpike and Canoe Creek Road east to the southwestern edge of Lake Gentry.



## SOUTHPORT CONNECTOR PUBLIC INFORMATION MEETING

**Tuesday, October 19, 2021**

5:30 p.m. - 7:30 p.m.

### In-person Meeting

Liberty High School Gymnasium  
4250 Pleasant Hill Road  
Kissimmee, FL 34746

### Virtual On-line Meeting

Pre-register at:

<http://bit.ly/SouthportMtgOct2021>

*(Link is case sensitive.)*

Either meeting option will allow participants to view a presentation, ask questions about the study, and submit comments.

CENTRAL  
FLORIDA  
EXPRESSWAY  
AUTHORITY



The regional Central Florida Expressway Authority is responsible for the planning, design, construction, operation and maintenance of a 125-mile limited-access expressway system to serve the five-county region. CFX's system includes SR 408 (Spessard L. Holland East-West Expressway), SR 528 (Martin Andersen Beachline Expressway), SR 417 (Central Florida GreeneWay), SR 429 (Daniel Webster Western Beltway), SR 414 (John Land Apopka Expressway), SR 429 (Wekiva Parkway), SR 538 (Poinciana Parkway), State Road 453 and State Road 451.

Central Florida Expressway Authority: 4974 ORL Tower Road, Orlando, FL 32807  
Phone: 407.690.5000 | Fax: 407.690.5011 | Email: [Info@CFXWay.com](mailto:Info@CFXWay.com)



# SOUTHPORT CONNECTOR EXPRESSWAY

PROJECT DEVELOPMENT AND ENVIRONMENT STUDY

## ★ STUDY GOALS

The goals of the Southport Connector Expressway PD&E Study include:

- Enhance mobility for the area's growing population and economy.
- Provide a limited-access facility from the Poinciana area to Florida's Turnpike and Canoe Creek Road.
- Provide connections between existing and future potential expressways within the study area.
- Promote regional connectivity.

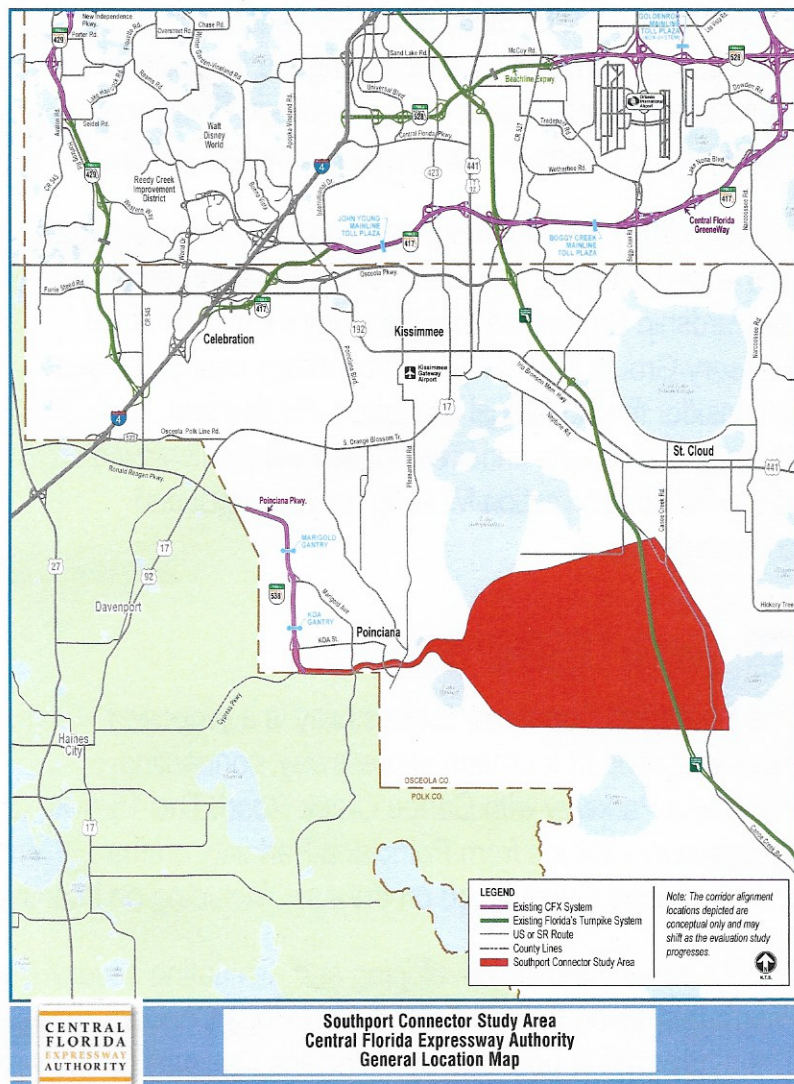
## 📄 STUDY PARTICIPATION

We value your input. Public involvement and interagency coordination is integral to the PD&E study, and opportunities for public participation will be provided. CFX anticipates holding three public meetings as part of this study.

**VISIT THE STUDY WEBPAGE AT:**

<https://rb.gy/mnta4y>

## 📍 STUDY MAP



For more information:

**Contact: Kathy Putnam, Public Involvement Coordinator**



407-802-3210



[ProjectStudies@CFXway.com](mailto:ProjectStudies@CFXway.com)



[www.CFXway.com](http://www.CFXway.com)



[@DriveEPASS](https://twitter.com/DriveEPASS)

**CENTRAL  
FLORIDA  
EXPRESSWAY  
AUTHORITY**



Public participation is solicited without regard to race, color, national origin, age, sex, religion, disability or family status. Para más información en español acerca del proyecto, por favor comuníquese con Kevin Camara al 786-859-1826 o por correo electrónico a [Kevin.Camara@QCAusa.com](mailto:Kevin.Camara@QCAusa.com).