



**CENTRAL  
FLORIDA  
EXPRESSWAY  
AUTHORITY**

# **Southport Connector Expressway Project Development and Environment Study**

**Poinciana Residents For Smart Change  
September 30, 2024**



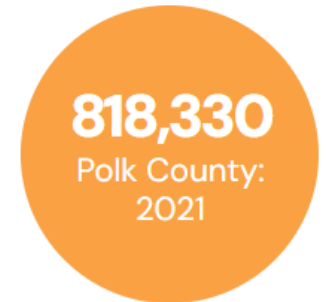
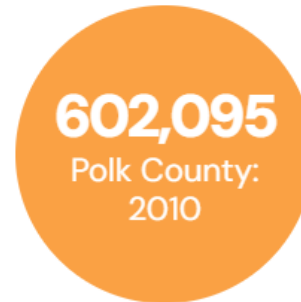
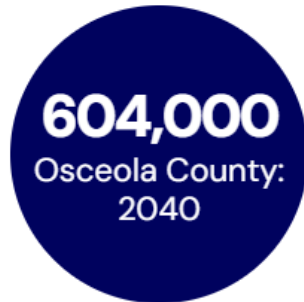
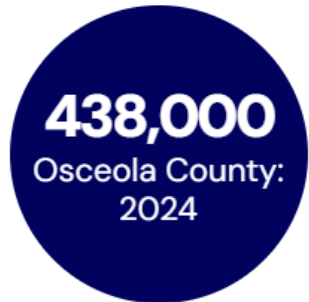
KIA  
CENTER

TRUIST

IT'S A STAR-STUDDED  
FOOTBALL WEEKEND

# Community Challenges – Project Need

## POPULATION



**25% INCREASE**  
OF VEHICLES PER DAY ON CYPRESS  
PARKWAY FROM 2019 TO 2024



**11,000 MORE HOMES**  
OSCEOLA COUNTY REVIEWING  
DEVELOPMENT PLANS FOR ADDITIONAL  
SINGLE FAMILY HOMES IN THE NEXT 5-10  
YEARS

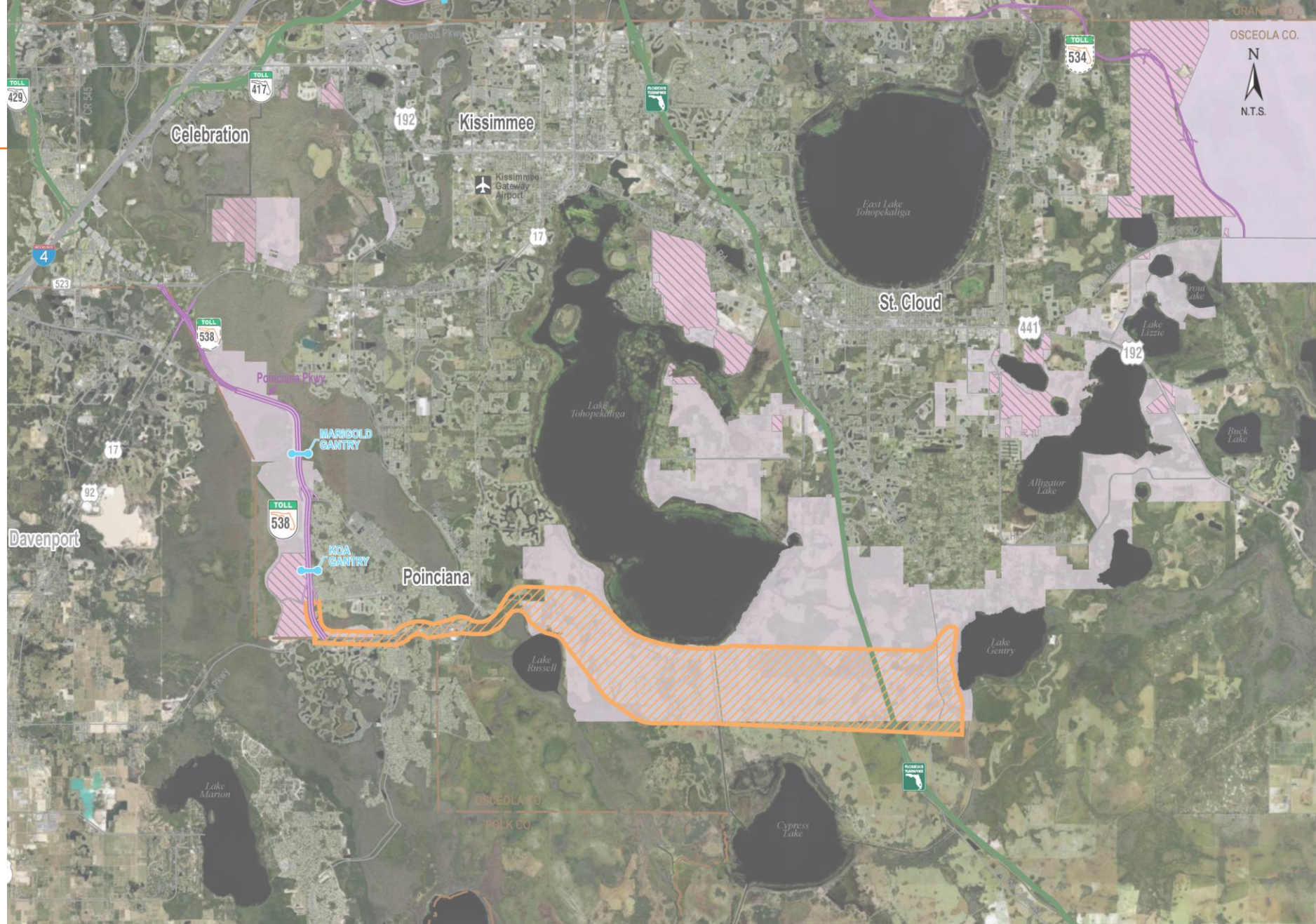
# Development Plans

Osceola County continues to be attractive for building new communities and commercial properties

Orange Cross-hatch:  
Study Area

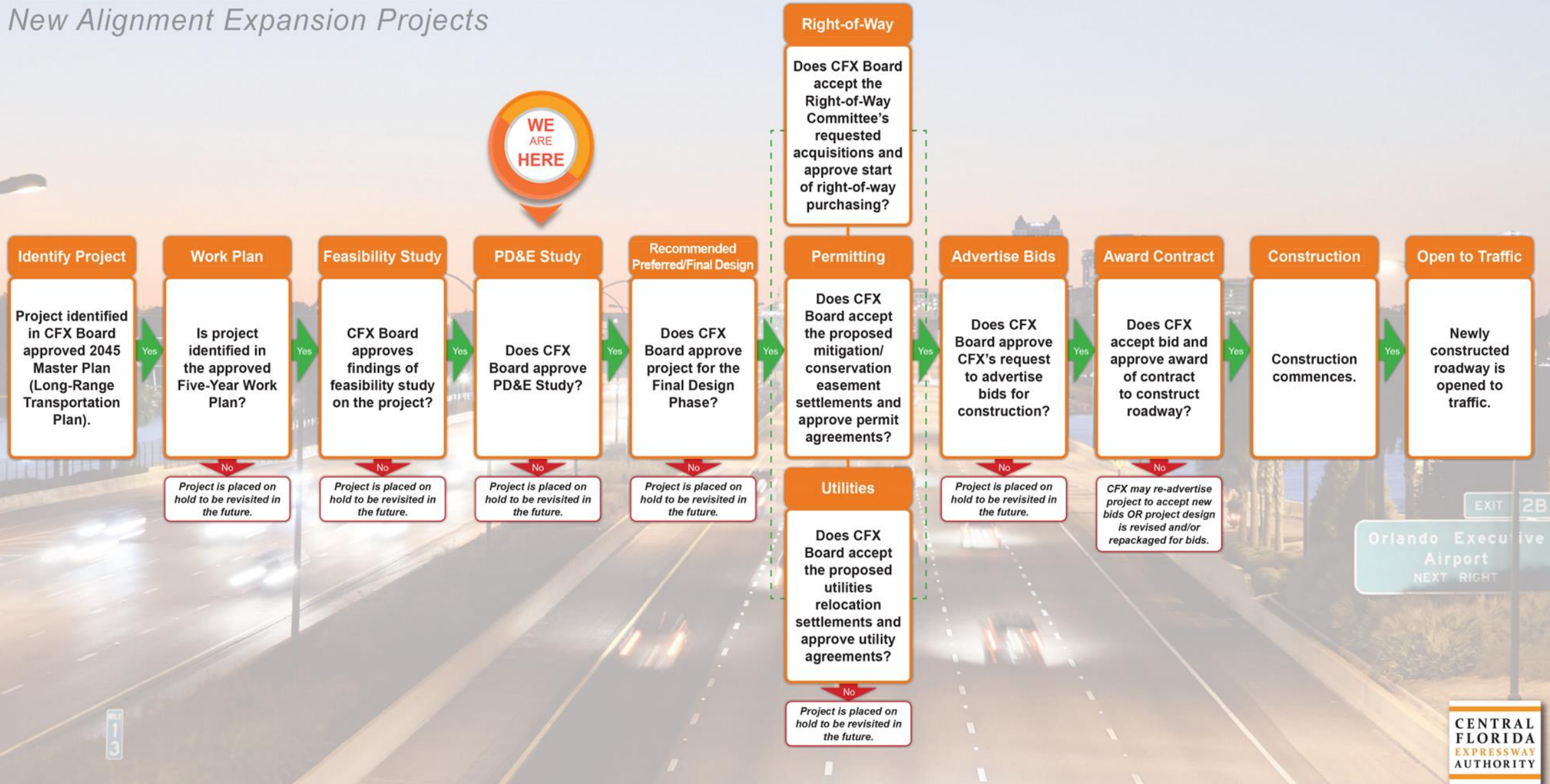
Lavender:  
Future Development

Lavender Cross-hatch:  
Development underway or approved site plans

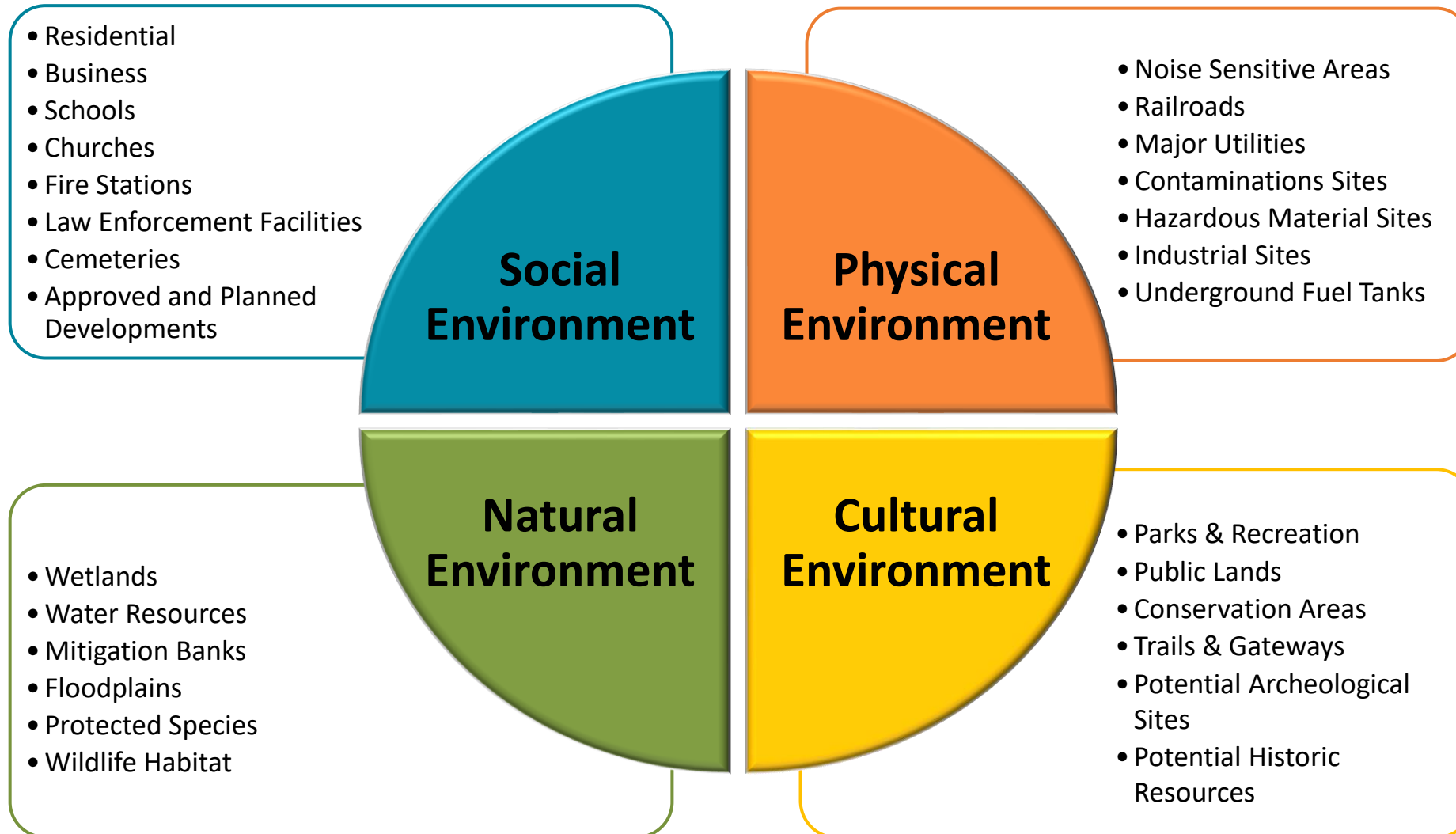


# PROJECT DEVELOPMENT PROCESS

## New Alignment Expansion Projects



# PD&E Study Evaluation Criteria



# PD&E Study Documents

---

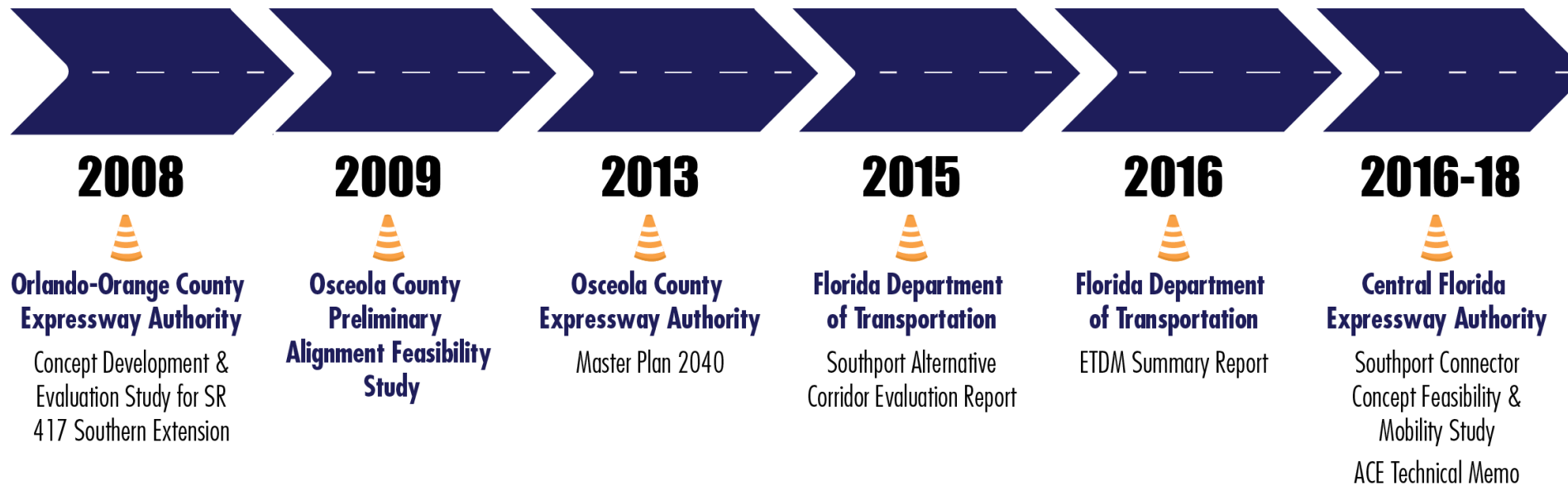
## Environmental

- *Air Quality Technical Memorandum*
- *Comments & Coordination Report*
- *Community Impact Assessment*
- *Contamination Screening Evaluation Report*
- *Cultural Resource Assessment Survey*
- *Natural Resource Evaluation*
- *Noise Study Report*
- *Project Environmental Impact Report*
- *Water Quality Impact Evaluation Checklist*

## Engineering

- *Alternative Corridor Evaluation Report*
- *Conceptual Design Roadway Plan Set*
- *Existing Conditions Technical Memorandum*
- *Geotechnical Report*
- *Location Hydraulics Report*
- *Pond Siting Report*
- *Preliminary Engineering Report*
- *Project Traffic Analysis Report*
- *Typical Section Package*
- *Utility Assessment Package*

# Project History

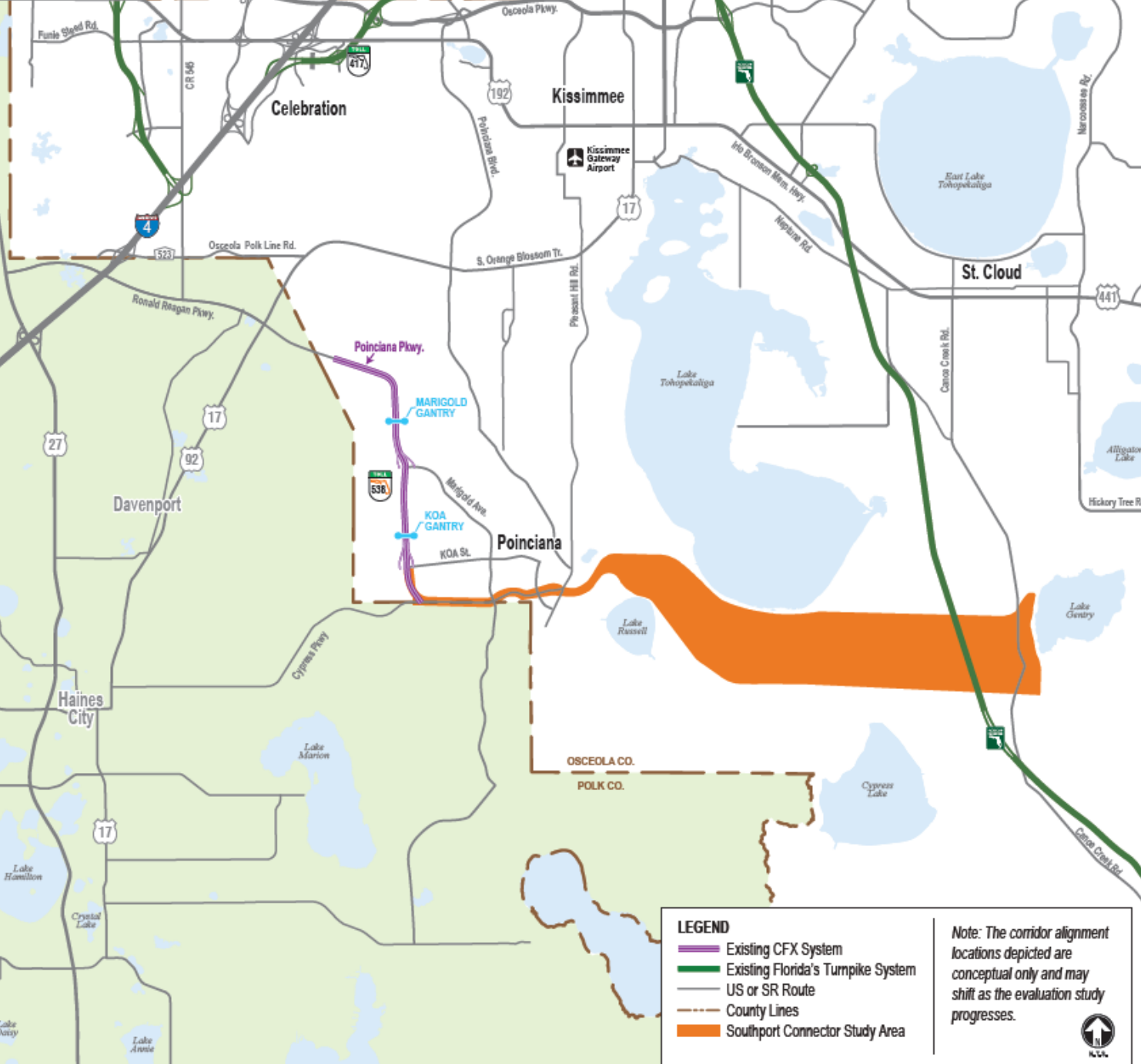


**2020-Present  
CFX Southport  
Connector  
Expressway  
PD&E Study**



# Study Area

- Proposed 15-mile expressway
- Osceola and Polk Counties
- Study Limits
  - Co-located along Cypress Parkway from Poinciana Parkway to Pleasant Hill Road
  - Continues east on a new alignment to Florida's Turnpike and Canoe Creek Road



# Project Priorities

---



Relieve congestion on local roads



Promote regional connectivity between Florida's Turnpike and Interstate 4



Balance regional needs with community concerns



Enhance evacuation and emergency response



Provide multimodal opportunities including a multi-use trail



Support economic development



# Finding Solutions: Project Overview

CFX is investing in the Poinciana community – seeking solutions to benefit everyone!

**Proposed improvements:** Could help relieve traffic tie-ups along Cypress Parkway – and more:

- **Easier Local Trips:**
  - Widening Cypress Parkway to six lanes
- **Elevated Expressway along Cypress Parkway:**
  - Commuters and others could make longer trips more quickly
- **Elevated Options:**
  - Wall, bridge structure or hybrid alternatives



**MOVE**  
POINCIANA

CENTRAL  
FLORIDA  
EXPRESSWAY  
AUTHORITY

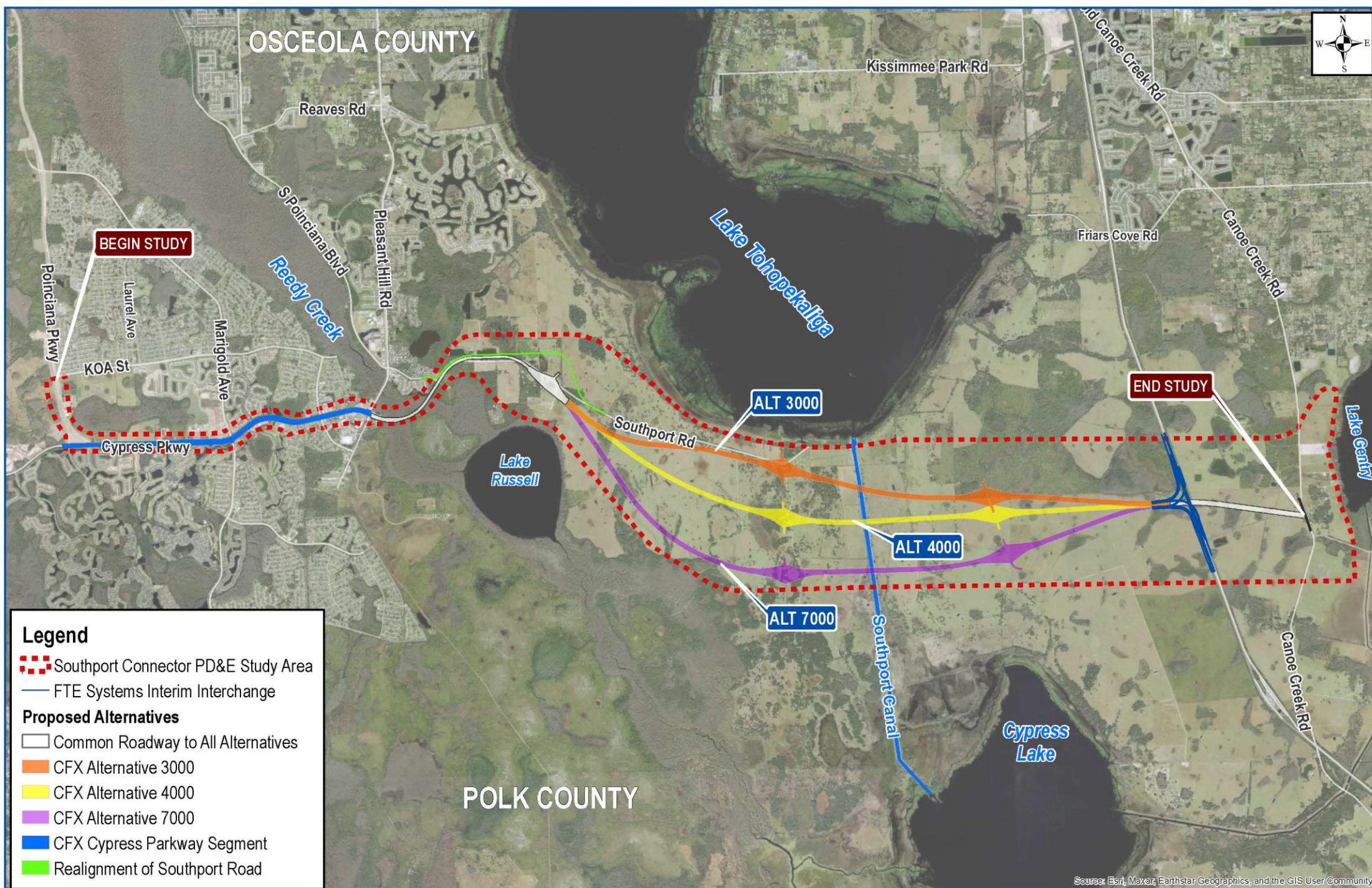
# Finding Solutions: Project Overview

- **Improvements for Pedestrians and Motorists:**
  - Multi-use trail
  - Upgrades to eight (8) intersections
  - Enhancing safety
- **Caring for the Community:**
  - Landscaping and other amenities being considered
  - Reviewing noise, light, other impacts
- **Environmental Stewardship**
  - Agency and advocacy coordination



**MOVE**  
POINCIANA

# OSCEOLA COUNTY



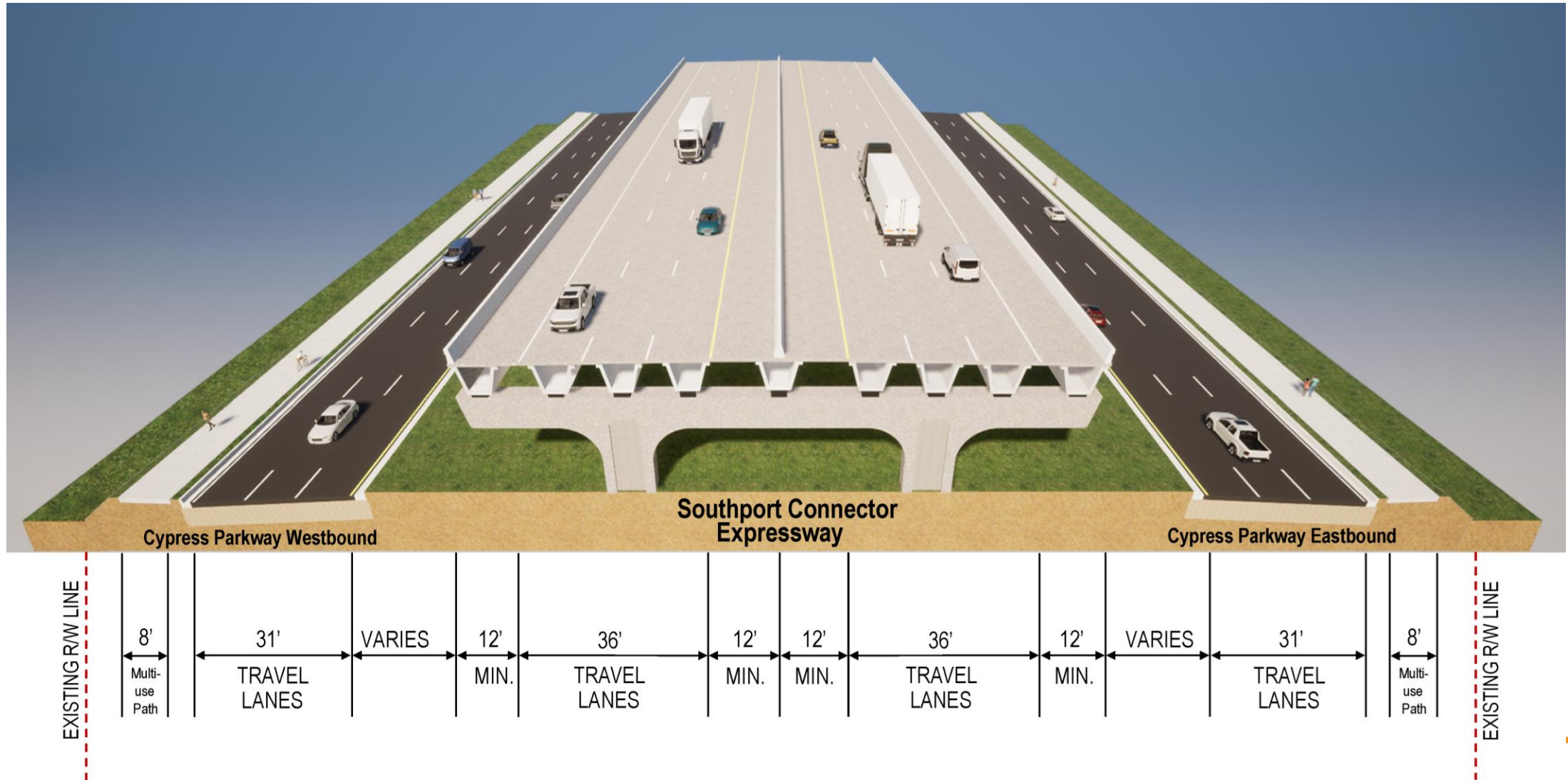
## Legend

- Southport Connector PD&E Study Area
- FTE Systems Interim Interchange
- Proposed Alternatives**
- Common Roadway to All Alternatives
- CFX Alternative 3000
- CFX Alternative 4000
- CFX Alternative 7000
- CFX Cypress Parkway Segment
- Realignment of Southport Road

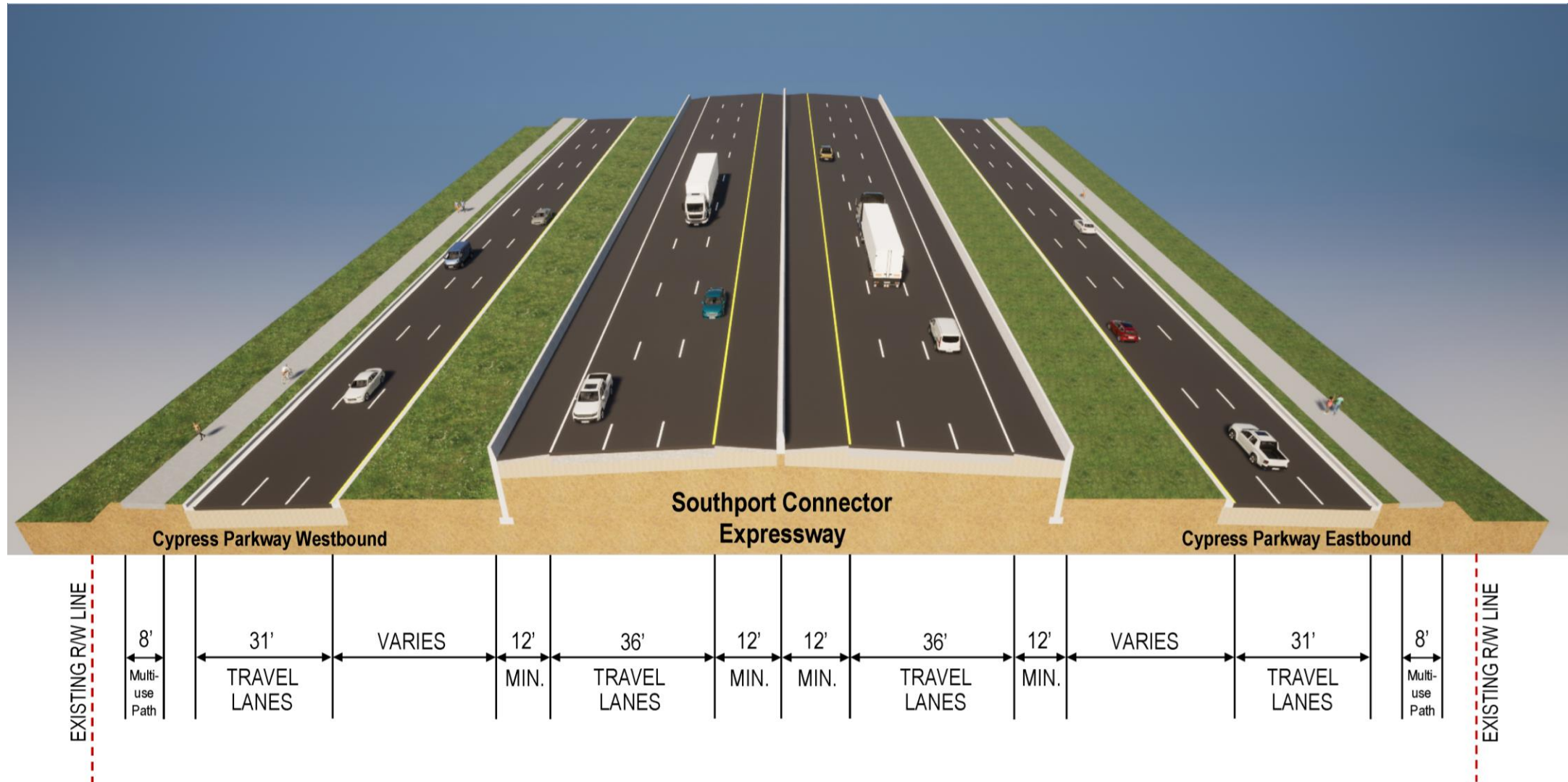
# POLK COUNTY

Source: Esri, Maxar, Earthstar Geographics, and the GIS User Community

# Typical Section: Cypress Parkway – Bridge Alternative



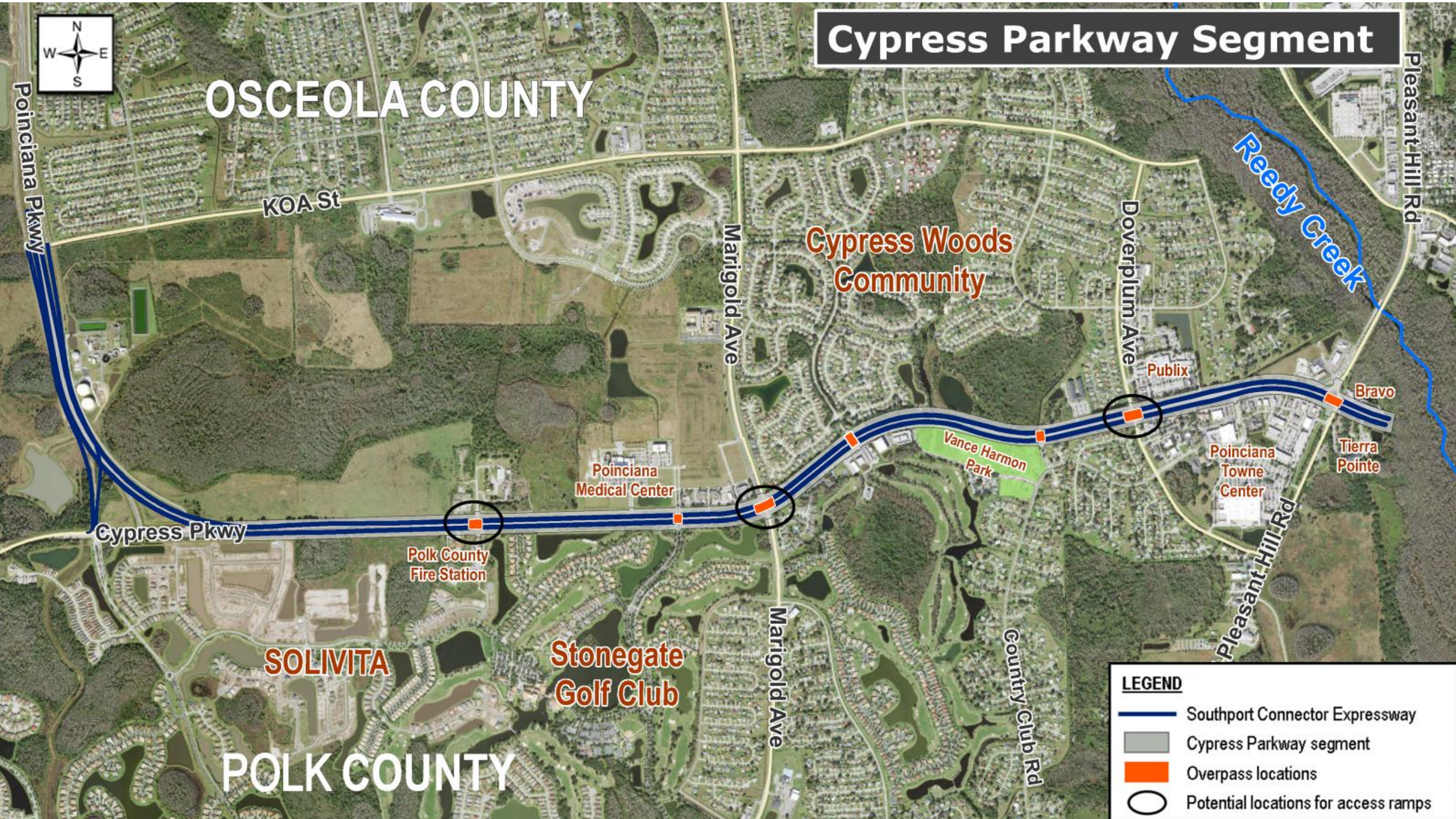
# Typical Section: Cypress Parkway - Wall Alternative



# Cypress Parkway Segment

OSCEOLA COUNTY

POLK COUNTY



**LEGEND**

- Southport Connector Expressway
- Cypress Parkway segment
- Overpass locations
- Potential locations for access ramps



# Poinciana Parkway / Solivita West Looking East



September 2024

# Solivita East (South Side) Looking West – Bridge Structure Alternative



# Solivita East (South Side) Looking West – Wall Alternative



September 2024

# Solivita East (South Side) Looking West

---



**Bridge Structure Alternative**



**Wall Alternative**

# Solivita East North Side Looking West – Bridge Structure Alternative



September 2024

Solivita East (North Side) Looking West  
– Wall Alternative



September 2024

# Solivita East (North Side) Looking West

---



**Bridge Structure Alternative**



**Wall Alternative**

# Marigold Ave (South Side) Looking West – Bridge Structure Alternative



September 2024



# Marigold Ave (South Side) Looking West – Wall Alternative



September 2024

# Marigold Ave (South Side) Looking West

---



**Bridge Structure Alternative**



**Wall Alternative**

# Cypress Branch Rd Looking West – Bridge Structure Alternative



# Cypress Branch Rd Looking West - Wall Alternative



September 2024

# Cypress Branch Rd Looking West

---



**Bridge Structure Alternative**



**Wall Alternative**

Doverplum Ave (North Side) Looking East – Bridge Structure Alternative



Doverplum Ave (North Side) Looking East  
– Wall Alternative



# Doverplum Ave (North Side) Looking East

---



**Bridge Structure Alternative**

**Wall Alternative**



# Pleasant Hill Rd Aerial View — Wall Alternative



September 2024

# Pleasant Hill Rd Aerial View – Bridge Structure Alternative



September 2024

# Pleasant Hill Rd Looking Southwest – Bridge Structure Alternative



September 2024

# Pleasant Hill Rd Looking Northwest – Bridge Structure Alternative



September 2024

An aerial photograph of a busy multi-lane intersection in Poinciana, Florida. The scene is filled with cars, a bus, and a truck. A large graphic overlay in the center reads 'MOVE POINCIANA' in white and orange text, with an orange arrow pointing to the right. The background shows a mix of commercial buildings, parking lots, and green spaces. A Wawa gas station is visible on the right side of the image.

# MOVE POINCIANA

What would this mean for the community?

# Community Investment – Social Benefits

---



**Reliable Travel Times:** Getting to work, school & medical appointments *on time*



**Enhanced Safety:** Less roadway gridlock would mean fewer collisions

- Fewer collisions also mean reduced medical, repair and other related costs



**Emergency Response Times:** Free-flowing traffic means help arrives sooner

- Enhanced evacuation times



**Less stop-and-go traffic:**

- Will help reduce carbon dioxide (CO2) emissions
- Means lower fuel costs
- Means more time spent doing the things we want and need to do!



**Easier travel** means less stress for all of us!

# Community Investment – Economic Benefits

---

## Employers



- Would see reduced productivity losses from late employees or delayed deliveries due to traffic tie-ups
- Will have less difficulty recruiting staff if folks know they'll have an easier commute



## Local Citizens

- Expressway construction would provide jobs



## Local Businesses

- Construction companies will require goods and services
- Project staff will patronize local businesses
  - Funneling money back into the local economy

# PUBLIC ENGAGEMENT SCHEDULE HIGHLIGHTS

	2024		2025				2026
	Q3	Q4	Q1	Q2	Q3	Q4	Q1
Community Outreach	[Dark blue bar spanning all quarters from Q3 2024 to Q1 2026]						
Informal Community Open House		★					
Advisory Group Meetings			[Dark blue bar spanning Q1 and Q2 2025]		[Dark blue bar spanning Q3 and Q4 2025]		
Alternatives Public Meeting			[Dark blue bar spanning Q1, Q2, and Q3 2025]				
Public Hearing (Recommended Alternative )					★		
CFX Governing Board Meeting Review						★	

*\*Subject to change*



# Public Involvement Opportunities

**We want to hear from you!** Here's how to be part of the Southport Connector Expressway PD&E Study:



Visit [MovePoinciana.com](https://MovePoinciana.com) to:

- Take the Survey
- Schedule a Community or Civic Group Presentation
- View study visuals in the Virtual Resource Space (Coming Soon)
- Find out about public meetings and other engagement opportunities



**Send us your Questions, Comments and Ideas**

Email us at: [ProjectStudies@CFXway.com](mailto:ProjectStudies@CFXway.com)

# Connect with Us!

CFX wants all members of the community to get engaged in evaluating travel solutions for Poinciana.

To ensure inclusivity and project understanding, CFX is providing many study resources and materials in English and Spanish:

- Website
- Survey
- Fact Sheet
- Flyer

**CONÉCTATE CON NOSOTROS**

 **VISITA NUESTRA PÁGINA WEB**  
[www.AvanzaPoinciana.com](http://www.AvanzaPoinciana.com)

 **SIGUE NUESTRAS REDES SOCIALES**  
[@CFXway](https://www.instagram.com/CFXway)

 **REALIZA LA ENCUESTA DE TRÁFICO**

 **HOJA INFORMATIVA**

**CENTRAL FLORIDA EXPRESSWAY AUTHORITY**

**AVANZA** →  
**POINCIANA**

CENTRAL  
FLORIDA  
EXPRESSWAY  
AUTHORITY

**MOVE**  
POINCIANA

**AVANZA**  
POINCIANA

THANK YOU!

QUESTIONS?